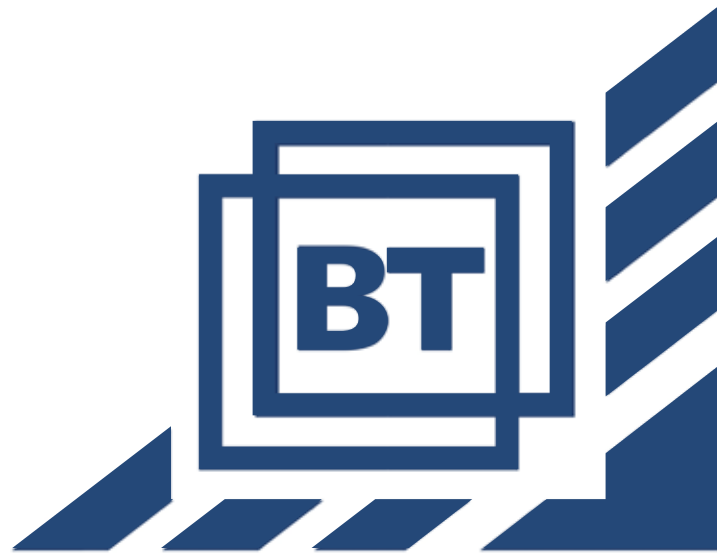


BTNyloplast

think. shape. connect.

Producer and supplier of fittings of the brand BT



Product Catalogue





BT NYLOPLAST B.V.

's Gravendeel - The Netherlands



BT NYLOPLAST GmbH

Aichach - Germany



BT NYLOPLAST Kft.

Vadna - Hungary

Introduction

Fittings for plastic pipes in every shape and size !

Within the Plastic Pipe Systems Division of the Tessenderlo Group, the factories of BT Nyloplast, located in the Netherlands, Germany and Hungary manufacture a wide range of fittings and accessories for plastic and concrete pipe systems.

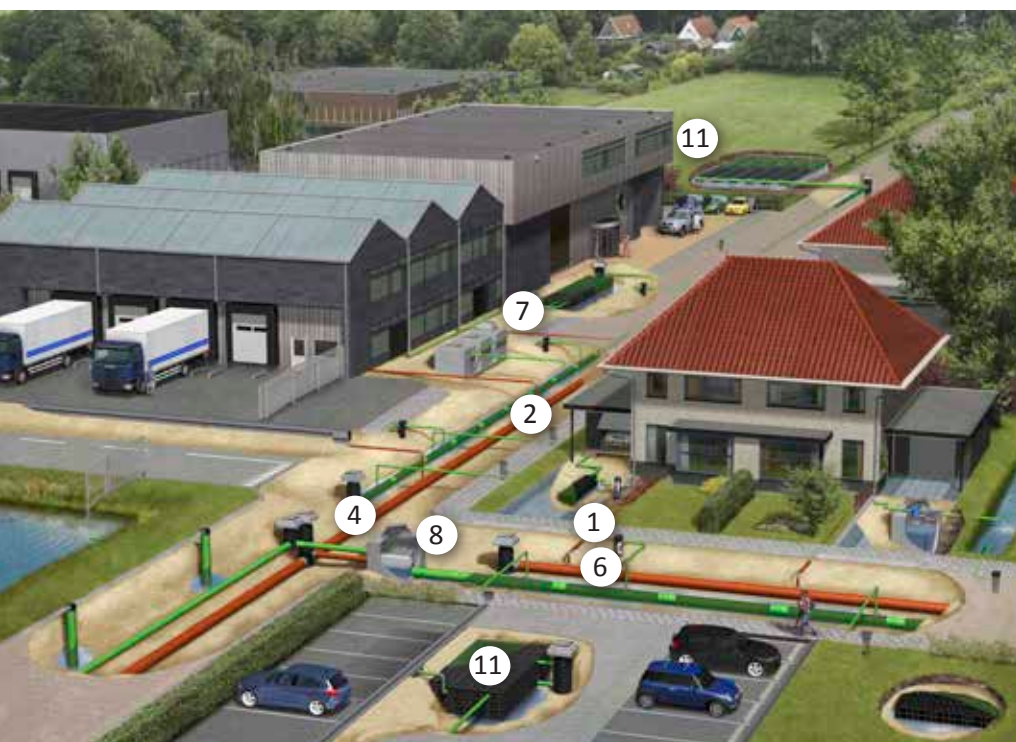
The BT Nyloplast factories are certified according to ISO 9001 and 14001. In our local European markets as well as other international areas, our wide range of fittings is well received, as is our personal service.

Our high quality fittings are made out of PVC, PP, PE-HD, Polystyrol, and comply with major European quality marks.

At BT Nyloplast, we think together with our partners in order to shape the right kind of fitting to connect any type of plastic pipe.



1. PVC-U SEWAGE FITTINGS Solvent Cement
2. PVC SEWAGE FITTINGS SDR 41/SN4
3. PP SEWAGE FITTINGS S13,3/SN8
4. INSPECTION CHAMBERS
5. PVC – SANITARY FITTINGS
6. PP – HT FITTINGS
7. PE – HD SEWAGE FITTINGS
8. SHAFT CONNECTORS
9. VENTILATION COMPONENTS
10. CLIENT SPECIFIC SOLUTIONS
11. OTHER SYSTEM OFFERING



We have more to offer

- Customized marking of fittings and labels according your individual requirements
- Production in various colours
- Wide program in fittings, turn-key solutions in co-operation with sister companies and own toolshop
- Know how and equipment for injection moulding production for external parties, in PVC, PP, PS and PE. Other materials on request
- Complete solutions for your customized projects



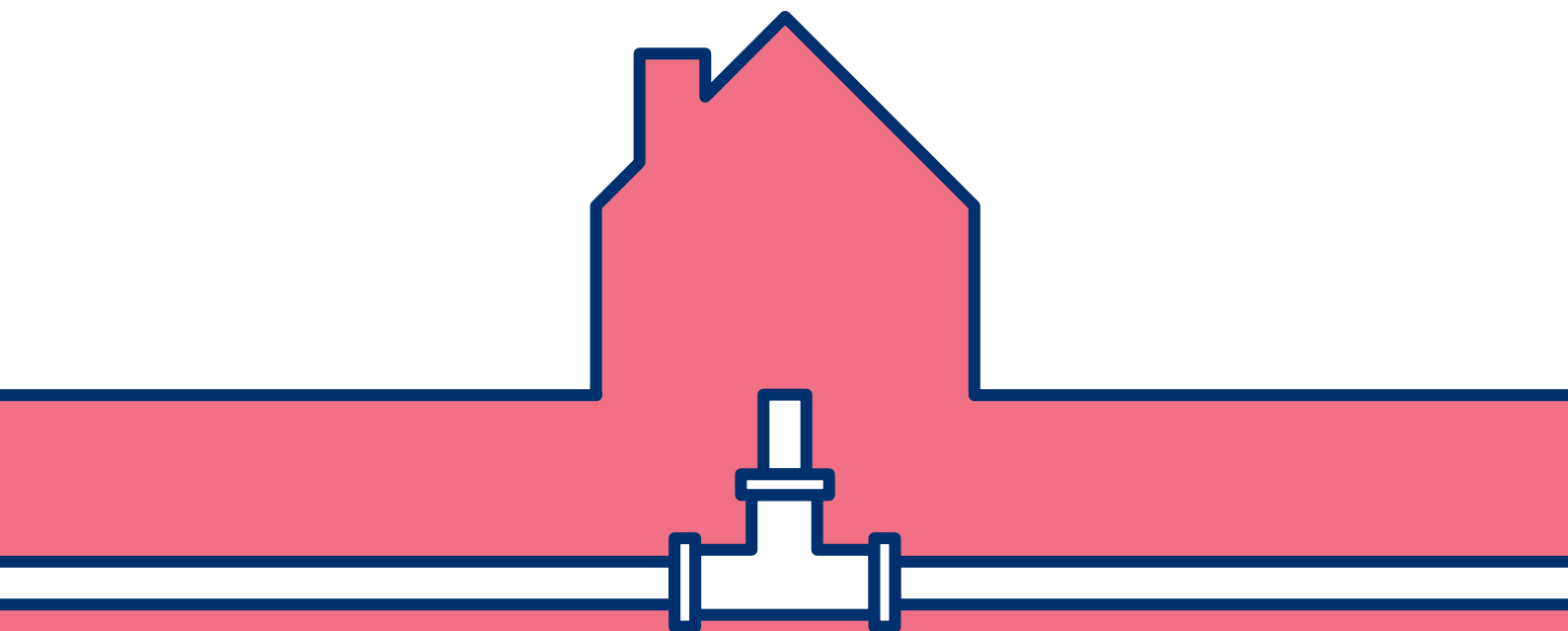
Contents

1.	PVC-U SEWAGE FITTINGS Solvent Cement	Page 05
2.	PVC SEWAGE FITTINGS SDR 41/SN4	Page 09
3.	PP SEWAGE FITTINGS S13,3/SN8	Page 25
4.	INSPECTION CHAMBERS	Page 29
5.	PVC – SANITARY FITTINGS	Page 39
6.	PP – HT FITTINGS	Page 43
7.	PE – HD SEWAGE FITTINGS	Page 46
8.	SHAFT CONNECTORS	Page 50
9.	VENTILATION COMPONENTS	Page 58
10.	CLIENT SPECIFIC SOLUTIONS	Page 62
11.	OTHER SYSTEM OFFERING	Page 64



PVC-U SEWAGE FITTINGS - SOLVENT CEMENT

(according to EN1329-1)



**APPLICATION AREA**

Fittings for sanitary, non-pressurised waste water pipes [PVC-U]

**APPROVAL**

KIWA

**MATERIAL DESIGNATION**

PVC-U

**STANDARD**

DIN 19531, EN-1329-1

**NOMINAL RING STIFFNESS**

SN4

**DIAMETER**

DN/OD 50 mm - 125 mm

**COLOURS**

Grey RAL 7037, special colours available on request

**SEALING RING SYSTEM**

BL lip seal or solvent cement connections

**PACKAGING TYPES**

Cartons on one-way pallets

KAMM - Double Coupler

D	L2
50mm	30mm
75mm	40mm



KAB - Bend 45° MF (male/female)

D	L1	L2
50mm	30mm	30mm
75mm	40mm	40mm



KAB - Bend 45° FF (female/female)

D	L1	L2
50mm	30mm	30mm
75mm	40mm	40mm



KAB - Bend 87° MF (male/female)

D	L1	L2
50mm	30mm	40mm
75mm	30mm	40mm



KAB - Bend 87° FF (female/female)

D	L1	L2
50mm	30mm	30mm
75mm	40mm	40mm



L1 - insertion length Spigot
L2 - insertion depth Socket

KAEA - T-Piece 45° MFF (male/female/ female)

D	L1	L2	L'2
50 x 50mm	30mm	30mm	30mm
75 x 75mm	40mm	40mm	40mm
75 x 50mm	40mm	40mm	30mm



KAEA - T-Piece 87° MFF (male/female/ female)

D	L1	L2	L'2
50 x 50mm	30mm	30mm	30mm
75 x 75mm	40mm	40mm	40mm



KA - Endcap with screw

D	L1
75mm	40mm
110mm*	60mm

* in red brown



KA - Balcony drain

D	dem	dsm1	dsm2
125 x 50mm	50mm	125mm	32mm
125 x 75mm	75mm	125mm	32mm



KAR - Reducer

D	L1	L2
75 x 50mm	40mm	30mm
110 x 50mm	48mm	30mm
110 x 75mm	48mm	40mm



KBA Floor drain

Dia. (mm)
125 x 75 x 50
125 x 75 x 63





PVC SEWAGE FITTINGS
SDR 41/SN4





APPLICATION AREA

Fittings for non-pressurised waste water pipes [PVC-U]



APPROVAL

Germany, Czech Republic, Austria, France, Belgium, UK/Kitemark, The Netherlands, Romania and Hungary. Check for possible exceptions



MATERIAL DESIGNATION

PVC-U, Ca/Zn-stabilised



STANDARD

EN 1401-1 Application UD



NOMINAL RING STIFFNESS

SDR 41 = SN4



DIAMETER

DN/OD 110 mm - 630 mm



COLOURS

Orange-brown RAL 8023 and Grey RAL 7037, special colours available on request



SEALING RING SYSTEM

BL-Lip seal / HB-FIX seal / SK seal

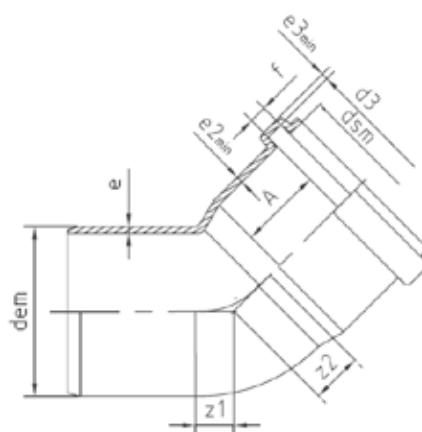


PACKAGING TYPES

Palletcarton / Cartons on one-way pallets / Carton boxes

KGB Bend MF (Male/Female)

D	α	Z1	Z2	Amin.
110	15°	9	15	32
	30°	17	22	32
	45°	25	29	32
	67°	41	47	32
	87°	59	65	32
125	15°	10	16	35
	30°	19	23	35
	45°	28	33	35
	67°	46	50	35
	87°	65	70	35
160	15°	13	19	42
	30°	24	30	42
	45°	36	42	42
	67°	59	65	42
	87°	83	89	42
200	15°	15	25	50
	30°	30	38	50
	45°	46	54	50
	67°	73	82	50
	87°	105	113	50
250	15°	28	34	55
	30°	46	50	55
	45°	66	69	55
	87°	141	143	55
	315	15°	35	42
30°		59	62	62
45°		84	86	62
87°		178	180	62
400		15°	34	53
	30°	64	83	70
	45°	96	110	70
	87°	216	229	70
	500	15°	37	59
30°		74	97	190
45°		114	137	190
90°		390	410	190
630		15°	205	240
	30°	251	286	205
	45°	527	469	205
	90°	935	970	205



KGB Bend FF (Female/Female)

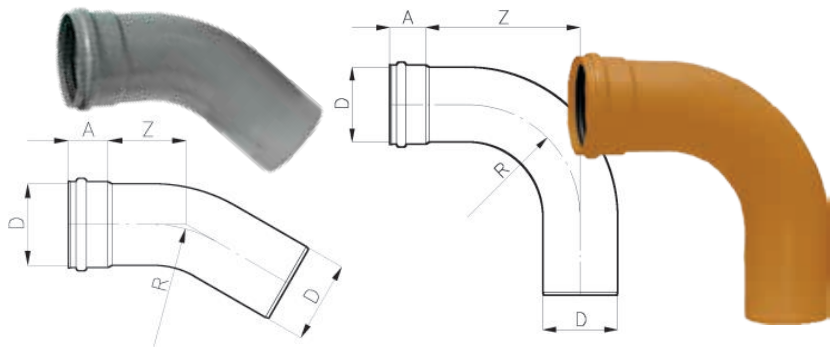
D	α	Z1	Z2	Amin.	
110	45°	30	30	32	
	87°	150	105	32	
125	45°	33	33	35	
	87°*	115	115	42	
160	45°	42	42	42	
	87°*	134	135	42	
200	15°	23	23	75	
	30°	38	38	75	
	45°	46	46	75	
	67°	73	82	75	
250	87°	155	155	81	
	15°	30	30	110	
	30°	49	49	110	
	45°	69	69	110	
315	87°	143	143	110	
	15°	38	38	125	
	30°	61	61	125	
	45°	86	86	125	
400	87°	180	180	110	
	15°	48	48	155	
	30°	78	78	155	
	45°	110	110	155	
500	87°	229	229	125	
	90°	410	410	190	
	630	15°	240	240	205
		30°	286	286	205
	45°	563	469	205	
	90°	970	970	205	

* Swept version



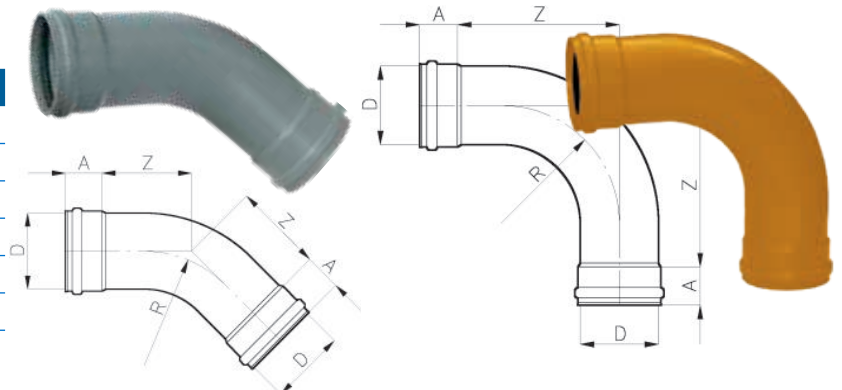
KGB Bend MF (Male/Female) R = 1,5xD

D	α	R	A	Z
200	45°	300	100	250
	90°	300	100	430
250	45°	375	120	275
	90°	375	120	500
315	45°	475	135	350
	90°	475	135	630



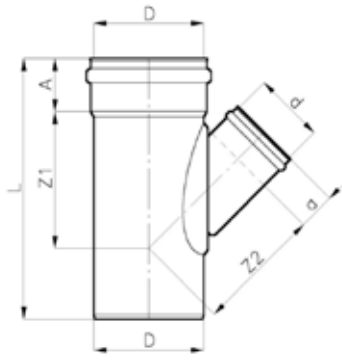
KGB Bend FF (Female/Female) R = 1,5 xD

D	α	R	A	Z
200	45°	300	100	250
	90°	300	100	430
250	45°	375	120	275
	90°	375	120	500
315	45°	475	135	350
	90°	475	135	630



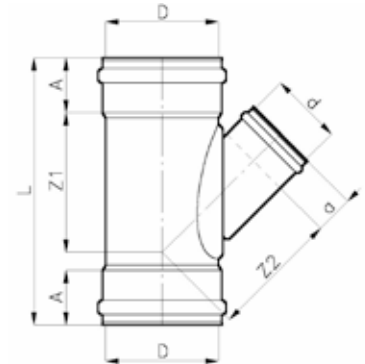
KGEA T-Piece 45° MFF (Male/Female/Female)

D	d	L	A	a	Z1	Z2
110	110	275	70	70	134	134
125	110	290	75	70	141	144
125	125	320	75	75	152	152
160	110	325	85	70	160	168
160	125	347	85	75	170	176
160	160	395	85	85	194	194
200	110	358	100	70	182	197
200	125	379	100	75	192	205
200	160	426	100	85	216	223
200	200	485	100	100	243	243
250	110	484	110	70	209	228
250	125	484	110	75	220	236
250	160	484	110	85	244	254
250	200	537	110	100	271	275
250	250	604	110	110	304	304
315	110	514	120	70	244	272
315	125	514	120	75	254	279
315	160	514	120	85	278	297
315	200	568	120	100	305	318
315	250	633	120	110	338	345
315	315	722	120	120	382	382
400	110	640	145	70	395	380
400	125	640	145	75	395	385
400	160	640	145	85	395	400
400	200	745	145	100	445	430
400	250	745	145	110	445	450
400	315	1000	145	120	520	460
400	400	1100	145	145	580	640
500	110	720	200	70	415	500
500	125	840	200	75	475	500
500	160	840	200	85	475	500
500	200	1000	200	100	550	565
500	250	1000	200	110	550	600
500	315	1100	200	120	600	635
500	400	1200	200	145	650	700
500	500	1400	200	200	750	735
630	110	825	225	70	500	630
630	160	990	225	85	585	655
630	200	990	225	100	585	675
630	250	990	225	110	585	700
630	315	1190	225	120	685	735
630	400	1340	225	145	760	800
630	500	1490	225	200	835	835



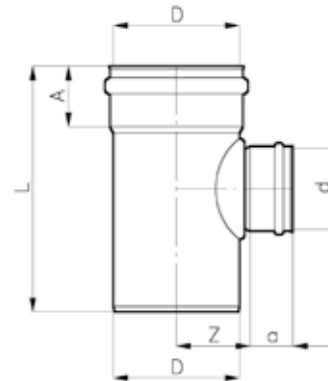
KGEA T-Piece 45° FFF (Female/Female/Female)

D	d	L	A	a	Z1	Z2
110	110	298	70	70	134	134
125	125	328	75	75	152	152
160	110	333	85	70	160	168
160	125	355	85	75	170	176
160	160	402	85	85	194	194
200	110	490	100	70	250	235
200	125	490	100	75	250	245
200	160	515	100	85	265	260
200	200	620	100	100	315	285
250	110	510	110	70	280	270
250	125	510	110	75	280	280
250	160	570	110	85	310	295
250	200	620	110	100	330	325
250	250	700	110	110	380	350
315	110	540	120	70	315	320
315	125	540	120	75	315	325
315	160	590	120	85	340	340
315	200	655	120	100	375	370
315	250	730	120	110	415	400
315	315	830	120	120	465	430
400	110	660	145	70	395	380
400	125	660	145	75	395	385
400	160	660	145	85	395	400
400	200	765	145	100	445	430
400	250	765	145	110	445	450
400	315	1000	145	120	520	460
400	400	1100	145	145	580	640
500	110	720	200	70	415	500
500	125	840	200	75	475	500
500	160	840	200	85	475	500
500	200	1000	200	100	550	565
500	250	1000	200	110	550	600
500	315	1100	200	120	600	635
500	400	1200	200	145	650	700
500	500	1400	200	200	750	735
630	160	990	225	85	585	655
630	200	990	225	100	585	675
630	250	990	225	110	585	700
630	315	1190	225	120	685	735
630	400	1340	225	145	760	800
630	500	1490	225	200	835	835
630	400	1340	225	145	760	800
630	500	1490	225	200	835	835



KGEE T-Piece 87° MFF (Male/Female/Female)

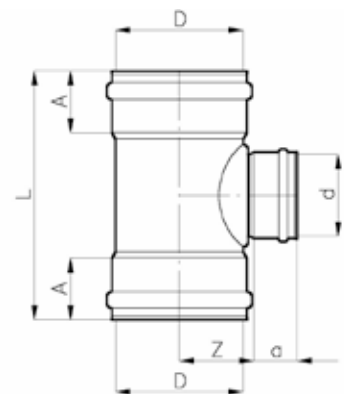
D	d	L	A	a	Z
110	110	238	70	70	62
125	110	250	75	70	69
125	125	265	85	75	70
160	110	278	85	70	86
160	125	294	85	75	87
160	160	328	100	85	89
200	110	320	100	70	108
200	125	337	100	75	108
200	160	369	100	85	110
200	200	409	100	100	113
250	110	415	110	70	132
250	125	415	110	75	132
250	160	415	110	85	134
250	200	500	110	100	136
250	250	500	120	110	143
315	110	438	120	70	143
315	125	438	120	75	104
315	160	438	120	85	104
315	200	590	120	100	170
315	250	590	120	110	174
315	315	590	120	120	178
400	110	565	145	70	220
400	125	565	145	75	220
400	160	565	145	85	220
400	200	630	145	100	225
400	250	630	145	110	225
400	315	880	165	120	240
400	400	880	165	145	240
500	110	720	200	70	310
500	125	720	200	75	310
500	160	720	200	85	310
500	200	840	200	100	315
500	250	840	200	110	315
500	315	1000	200	120	320
500	400	1000	200	145	325
500	500	1000	200	200	400
630	110	700	225	70	425
630	125	700	225	75	425
630	160	825	225	85	425
630	200	825	225	100	430
630	250	825	225	110	435
630	315	990	225	120	435
630	400	990	225	145	440
630	500	990	225	200	460
630	630	1340	225	225	415



KGEA T-Piece 87° FFF (Female/Female/Female)

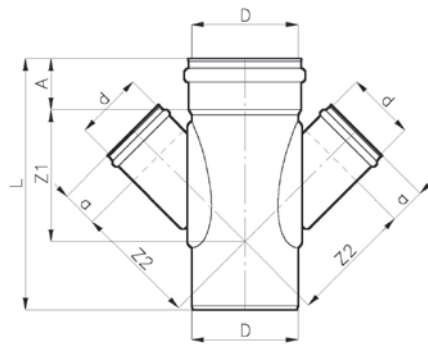
D	d	L	A	a	Z
110	110*	272	70	70	62
125	125*	300	75	75	70
160	110*	311	85	70	86
160	125*	329	85	75	87
160	160*	363	85	85	89
200	110	400	100	70	120
200	125	400	100	75	120
200	160	435	100	85	120
200	200	480	100	100	125
250	110	425	110	70	145
250	125	425	110	75	145
250	160	465	110	85	150
250	200	510	110	100	155
250	250	565	110	110	155
315	110	460	120	70	185
315	125	460	120	75	185
315	160	495	120	85	180
315	200	540	120	100	185
315	250	605	120	110	190
315	315	665	120	120	195
400	110	585	145	70	220
400	125	585	145	75	220
400	160	585	145	85	220
400	200	650	145	100	225
400	250	650	145	110	225
400	315	880	165	120	240
400	400	880	165	145	240
500	110	720	200	70	310
500	125	720	200	75	310
500	160	720	200	85	310
500	200	840	200	100	315
500	250	840	200	110	315
500	315	1000	200	120	320
500	400	1000	200	145	325
500	500	1100	200	200	400
630	200	825	225	100	430
630	250	825	225	110	435
630	315	990	225	120	435
630	400	990	225	145	440
630	500	1190	225	200	460
630	630	1390	225	225	415

* Swept version



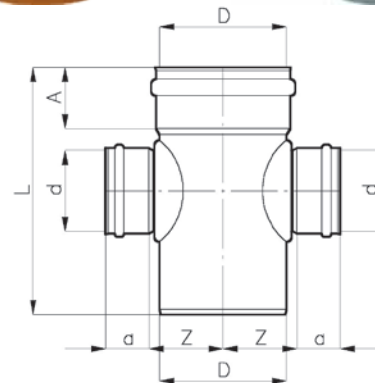
KGED Double T-Piece 45° MFFF (Male/Female/Female/Female)

D	d	Z1	Z2	A	a	L
110	110	141	141	57	57	288
125	125	157	157	64	64	316
160	160	250	230	85	85	490
200	200	300	285	100	100	590
250	110	280	270	110	70	510
250	160	310	295	110	85	570
250	200	330	325	110	100	620
250	250	380	350	110	110	700
315	110	315	320	120	70	535
315	160	340	340	120	85	585
315	200	375	370	120	100	650
315	250	415	400	120	110	725
315	315	465	430	120	120	825
400	160	395	400	145	85	640
400	200	445	430	145	100	745
400	250	445	450	145	110	745
400	315	520	460	145	120	1000



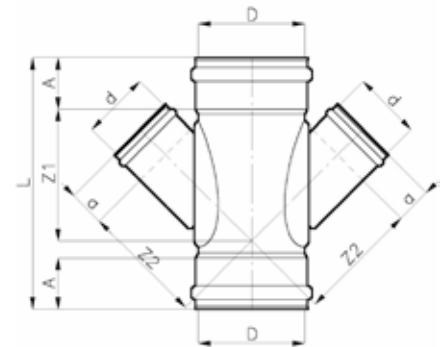
KGDA Double T-Piece 87° MFFF (Male/Female/Female/Female)

D	d	Z	A	a	L
110	110	60	50	50	230
125	125	80	75	75	340
160	160	100	85	85	400
200	200	125	100	100	480
250	110	145	110	70	465
250	160	150	110	85	465
250	200	150	110	100	510
250	250	155	110	110	565
315	110	185	120	70	450
315	160	180	120	85	490
315	200	185	120	100	530
315	250	190	120	110	600
315	315	195	120	120	660
400	160	220	145	85	565
400	200	225	145	100	630
400	250	225	145	110	630
400	315	240	165	120	880



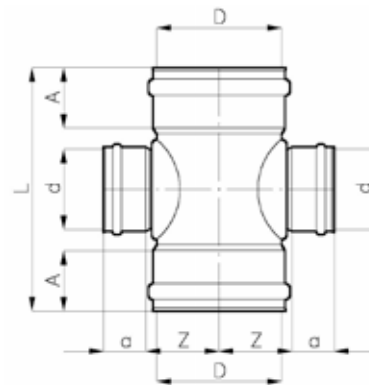
KGDA Double T-Piece 45° FFFF (Female/Female/Female/Female)

D	d	Z1	Z2	A	a	L
125	110	141	144	55	50	280
125	125	152	152	55	55	300
200	110	250	235	100	70	490
200	200	300	330	100	100	590
250	125	280	280	110	75	510
250	200	330	325	110	100	620
315	200	375	370	120	100	655
315	250	415	400	120	110	730
400	160	395	400	145	85	660



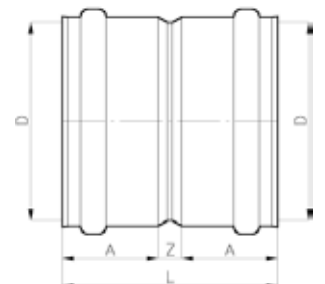
KGDA Double T-Piece 87° FFFF (Female/Female/Female/Female)

D	d	Z1	A	a	L
110	110	60	50	50	230
125	110	80	75	70	340
125	125	85	75	75	340
160	110	100	85	70	400
160	125	100	85	75	400
160	160	100	85	85	400
200	125	120	100	75	400
200	160	120	100	85	435
200	200	125	100	100	480
250	110	145	110	70	465
250	125	145	110	75	465
250	160	150	110	85	465
250	200	150	110	100	510
250	250	155	110	110	565
315	125	185	120	75	460
315	160	180	120	85	495
315	200	185	120	100	540
315	250	190	120	110	605
315	315	195	120	120	665
500	500	400	200	200	1100



KGMM Double Coupler

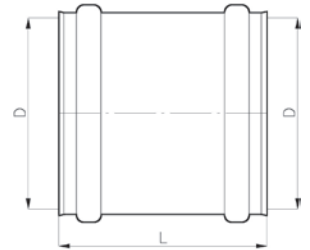
D	L	A	Z
110	122	70	20
125	110	75	20
160*	132	85	20
200	158	100	30
250	250	110	30
315	293	120	40
400	340	145	50
500	460	200	60
630	520	225	70



*also available in lengths 150, 176 and 190mm

KGU Repair Coupler

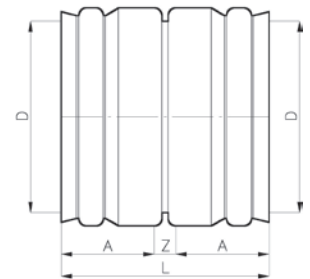
D	L
110	122
125	110
160*	132
200	158
250	250
315	293
400	340
500	460
630	520



*also available in lengths 135, 150, 176 and 190mm

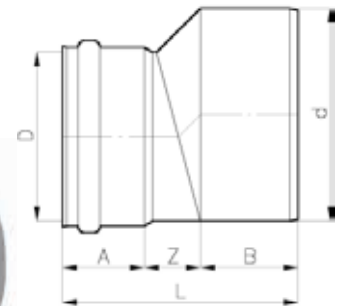
KGMMF Flexible Double Coupler

D	L	A	Z
110	160	70	20
125	170	75	20
160	190	85	20
200	230	100	30
250	240	100	40
315	310	135	40
400	380	165	50
400	340	145	50



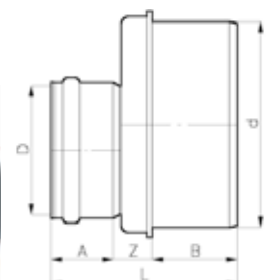
KGR Eccentric Reducer

d	D	L	A	B	Z
125	110	139	43	81	15
160	110	172	43	95	34
160	125	173	47	97	29
200	125	285	80	115	90
200	160	204	56	117	31
250	160	264	74	125	65
250	200	261	65	149	47
315	200	390	100	155	135
315	250	302	81	159	62
400	315	340	85	188	67
500	400	495	165	188	142



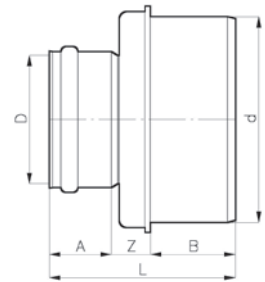
KGR Semi-Eccentric Reducer

d	D	L	A	B	Z
250	110	255	70	135	50
315	110	300	70	145	85
315	160	315	85	145	85
400	200	370	100	165	105
400	250	380	110	165	105
500	250	335	110	250	-25
630	250	490	110	270	110
630	400	535	145	270	120



KGR Concentric Reducer

D	d	L	A	B	Z
400	200	370	100	165	105
400	315	395	120	165	110
500	315	280	120	180	-20
630	500	500	200	265	35



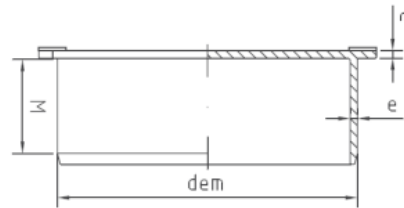
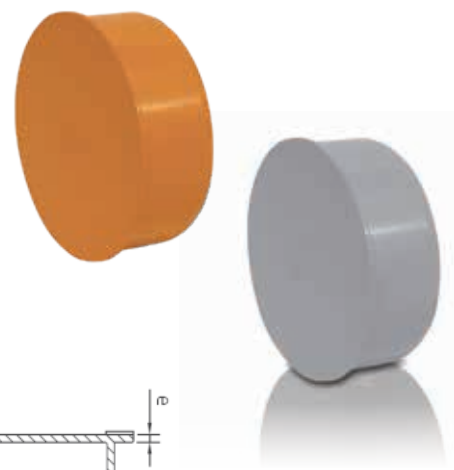
KGK Endcap F (Female)*

D	L
110	46
125	46
160	53
200	65
250	69
315	76
400	86
500	87
630	95



KGM Socket Plug (Male)

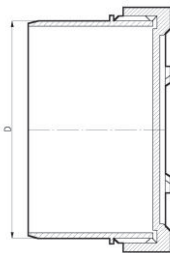
D	L
110	45
125	45
160	53
200	64
250	95
315	100
400	114
500	187
630	200



*also available in thick-walled and thin-walled versions

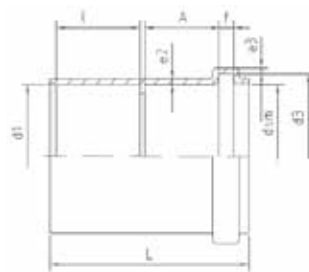
KGRS Endcap Screw Cover

D
110
125
160
200
250
315
400
500
630



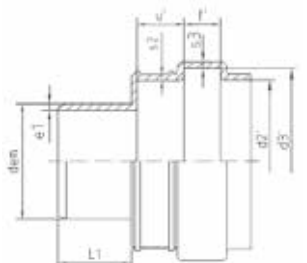
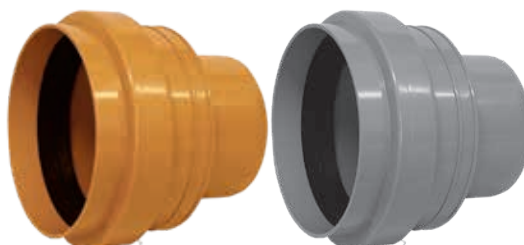
KGAM Single socket

D	X	L
110	3,1	90
125	3,1	98
160	3,8	117
200	4,7	141



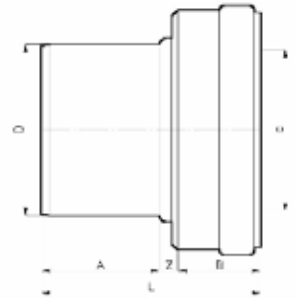
KGUS Clay Pipe Adapter (clay pipe spigot)

D	d2	d3	L1	L
110	138	156,1	60	151
125	163	186,1	67	172
160	193	216,3	81	207
200	249	278,2	99	248



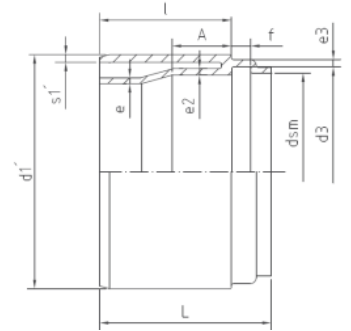
KGUS Clay Pipe Adapter (clay pipe spigot)

D	d	d3	L	A	B	Z
250	250	317	332	125	84	95



KGUSM Clay Pipe Adapter (clay pipe socket)

D	d1	L	lmin
110	132	90	70
125	160	92	70
160	187	97	70
200	242	100	70



KGUG Cast Iron Adapter (CI pipe spigot)

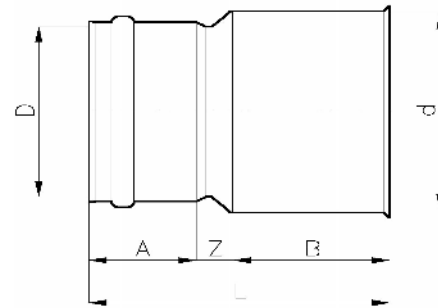
D	d	L	A	B	Z
110	157	210	70	105	35
125	157	205	75	100	30
160	184	240	85	125	30
200	232	275	100	135	40

KGUG Clay Pipe Adapter (clay pipe spigot)

D	d	L	A	B	Z
110	180	210	70	80	60
125	180	215	75	80	60
125	206	260	75	110	70
160	206	240	85	115	40

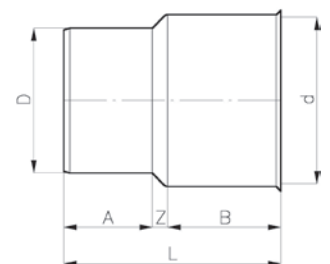
KGUG A.C. Pipe Adapter (AC pipe spigot)

D	d	L	A	B	Z
110	161	210	70	100	40
125	161	205	75	100	30
160	188	240	85	125	30



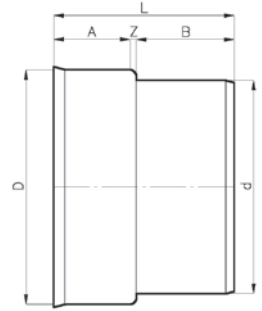
KGUG Shrink-on Adapter MF (Male/Female)

D	d	L	A	B	Z
32	45	90	35	45	10
40	55	110	45	55	10
50	69	140	45	65	30
50	75	125	50	60	15
75	88	135	55	65	15
75	115	200	75	100	25
90	120	210	90	100	20
100	120	215	100	100	15
110	121	170	75	85	10
125	148	200	80	95	25
160	174	230	100	110	20



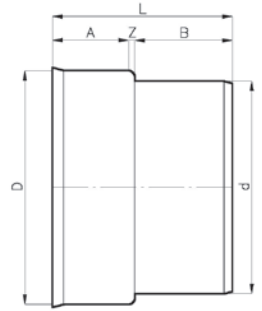
Ultra Rib – PVC Sewer Adapter MF (Male/Female)

D	d	L	A	B	Z
150	160	231	92	110	11
225	200	220	85	100	35
225	250	260	110	135	15
300	315	310	150	145	15



X-Stream – PVC Sewer Adapter MF (Male/Female)

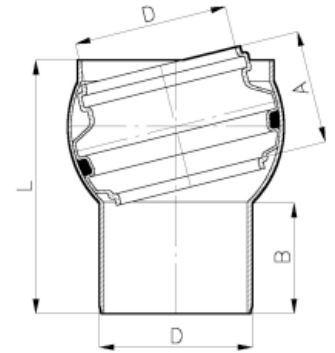
D	d	L	A	B	Z
225*	200	220	85	100	35
282*	250	236	89	125	22
338*	315	247	86	132	29
450	400	345	127	175	43



*also available in FxF

KGCF Swivel Joint Spigot FM

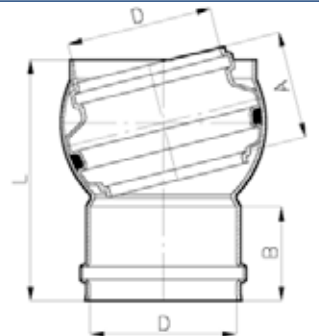
D	L	A	B
110	190	80	80
125	210	85	85
160	250	110	95
200	306	135	120
250	349	190	125



Sockets allow 15° movement in all directions

KGCF Swivel Joint Spigot FF

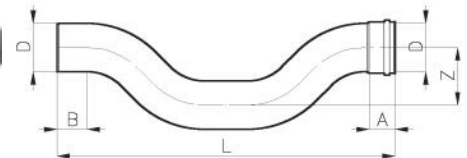
D	L	A	B
125	210	85	75
160	250	110	85
200	303	135	100



Sockets allow 15° movement in all directions

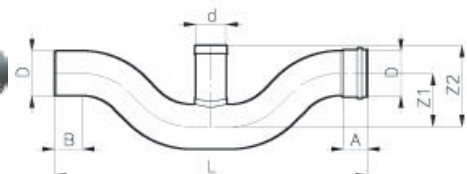
KGCF Sifon without Access

D	L	A	B	Z
110	840	70	70	140
125	910	75	75	160
160	1120	85	85	190



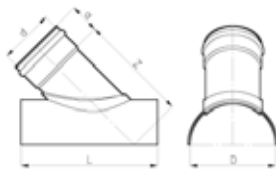
KGCF Sifon with Access

D	d	L	A	B	Z1	Z2
110	80	840	70	70	140	220
125	100	910	75	75	160	250
160	110	1120	85	85	190	290



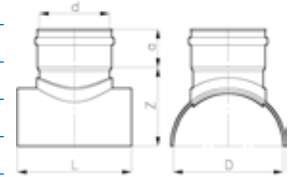
KGAB Saddle Piece 45°

D	d	L	A	Z
125	110	258	70	200
160	110	260	70	225
160	125	300	75	235
200	110	318	70	255
200	125	340	75	260
200	160	390	85	285
250	110	275	70	290
250	125	300	75	300
250	160	400	85	320
250	200	450	100	340
315	110	275	70	340
315	125	300	75	355
315	160	432	85	375
315	200	450	100	400
315	250	550	120	425
400	110	300	70	410
400	125	325	75	420
400	160	370	85	465
400	200	450	100	475
400	250	550	120	505
400	315	550	120	575
500	125	325	75	505
500	160	370	85	525
500	200	450	100	550
500	250	550	120	575



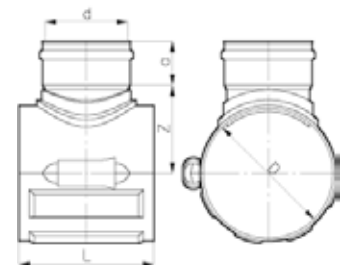
KGAB Saddle Piece 90°

D	d	L	A	Z
160	110	200	70	130
200	110	200	70	150
200	125	220	75	150
200	160	260	85	150
250	110	200	70	180
250	125	220	75	180
250	160	260	85	180
250	200	300	100	185
315	110	200	70	225
315	125	220	75	225
315	160	270	85	225
315	200	300	100	230
315	250	350	120	230
400	110	210	70	280
400	125	230	75	280
400	160	300	85	280
400	200	310	100	285
400	250	360	120	285
400	315	475	135	290
500	125	230	75	345
500	160	320	85	345
500	200	370	100	350
500	250	420	120	350
500	315	475	135	355



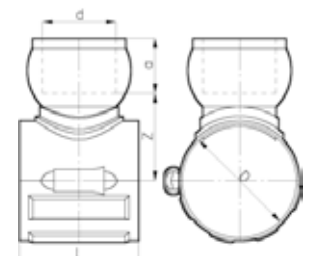
KGABE Saddle Piece with Wedge 90°

D	d	L	a	Z
160	110	210	70	135
160	125	210	75	110
200	110	215	70	155
200	125	215	75	130
200	160	240	85	140
250	110	225	70	185
250	125	225	75	160
250	160	255	85	170
315	110	270	70	185
315	125	270	75	190
315	160	290	85	200



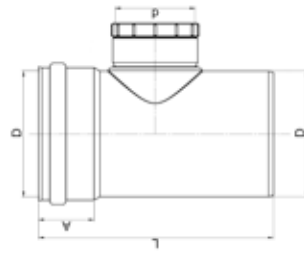
KGABE Saddle Piece with Wedge + Swivel Joint 90°

D	e	L	a	Z
160	125	210	85	150
250	160	255	110	230
315	125	270	85	230
315	160	290	110	260



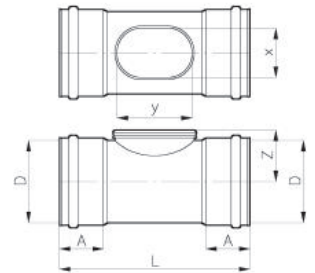
KGRE Cleaning T-Piece with screw cap

D	d	L	A
110			
125			
160			
250	160	465	110
315	160	490	120
400	160	565	145



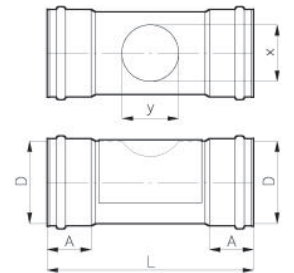
Access channel with clic-on cap

D	L	A	Z	x	y
125	385	75	105	116	144
160	370	85	100	96	146



Access channel with slip cap

D	L	A	x	y
200	405	100	105	105
250	425	120	116	116
315	450	135	127	127
400	700	145	195	195



KGSZ Backwater valve

D
50
110
125
160
200



KGSZ double flap backwater valve

D	H	L	W
ZB2K 110	227	486	288
ZB2K 160	293	626	243



KGSZ backwater valve for vertical assembly

D	H	L	W
ZBPION 110	287	188	210



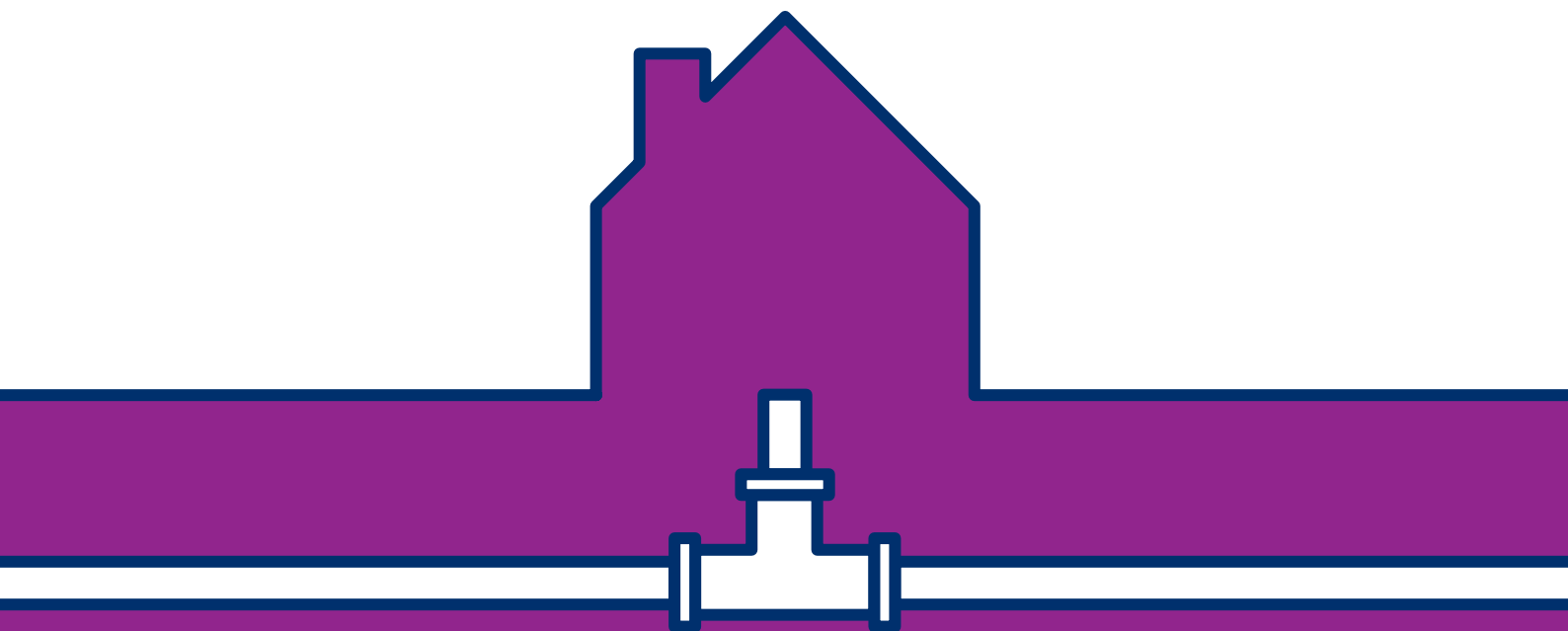
KGSZ flap backwater valve

D	H	L	W
ZBK 110	155	111	155
ZBK 160	209	144	212
ZBK 200	265	180	265
ZBK-DR 72-110	155	111	155





PP **Solydo** SEWAGE FITTINGS
S 13,3/SN8



**APPLICATION AREA**

Fittings for underground, non-pressurised waste water pipes [PP]

**APPROVAL**

Germany, Belgium, Netherlands. Check for possible exceptions

**MATERIAL DESIGNATION**

PP-Copolymer with high E-Modul (PPHM)

**STANDARD**

DIN EN 1852-1-Application UD

**NOMINAL RING STIFFNESS**

S13,3=SN8

**DIAMETER**

DN/OD 110 mm - 400 mm

**COLOURS**

Orange-brown RAL 8023 and Grey RAL 7037, special colours available on request

**SEALING RING SYSTEM**

HB-Fix seal

**PACKAGING TYPES**

Cartons on one-way pallets

PPGB Bend 15° MF(Male/Female) S13,3=SN8

DN/OD	Z1	Z2
125	12	24
160	12	31
200	16,5	36
250		
315		



PPGB Bend 30°MF(Male/Female) S13,3=SN8

DN/OD	Z1	Z2
125	20	32
160	25	43
200	30,5	50
250		
315		



PPGB Bend 45°MF(Male/Female) S13,3=SN8

DN/OD	Z1	Z2
125	29	41
160	38	56
200	45,5	65
250		
315		



PPGB Bend 87,5°MF(Male/Female) S13,3=SN8

DN/OD	Z1	Z2
125	65	77
160	87	104,5
200	101,5	121
250		
315		



PPGEA T-Piece 45° MFF(Male/Female/Female) S13,3=SN8

DN/OD	Z1	Z2	Z3	L
125 x 125	29,5	156	156	321
160 x 110	36,5	201	171	397
160 x 125	36,5	201	179	397
160 x 160	36,5	201	199	397
200 x 160*	17	225	222	430
200 x 200*	45,5	248	248	485
250 x 160*				
250 x 200*				
250 x 160*				
250 x 200*				
250 x 250				



* also available in Female/Female

3 PPGEA T-Piece 90° MFF(Male/Female/Female) S13,3=SN8

DN/OD

200 x 160*

200 x 200*

250 x 160*

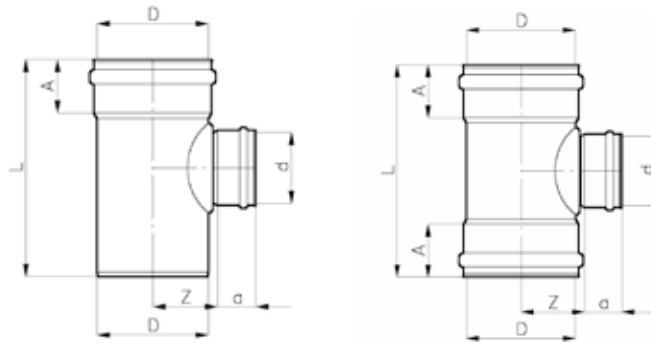
250 x 200*

250 x 250*

315 x 160

315 x 200

* also available in Female/Female



PPGR Excentric reducer S13,3=SN8

DN/OD	L	Z1
125 x 110	156	26
160 x 110	190	46
160 x 125	191	41
200 x 160	224	47



PPGMS butt welding socket S13,3=SN8

DN/OD	L
125	38
200	45
250	60
315	66



PPGMM double coupler S13,3=SN8

DN/OD	x	L
125	3	126
200	5	174
250	6	224
315	7,5	259



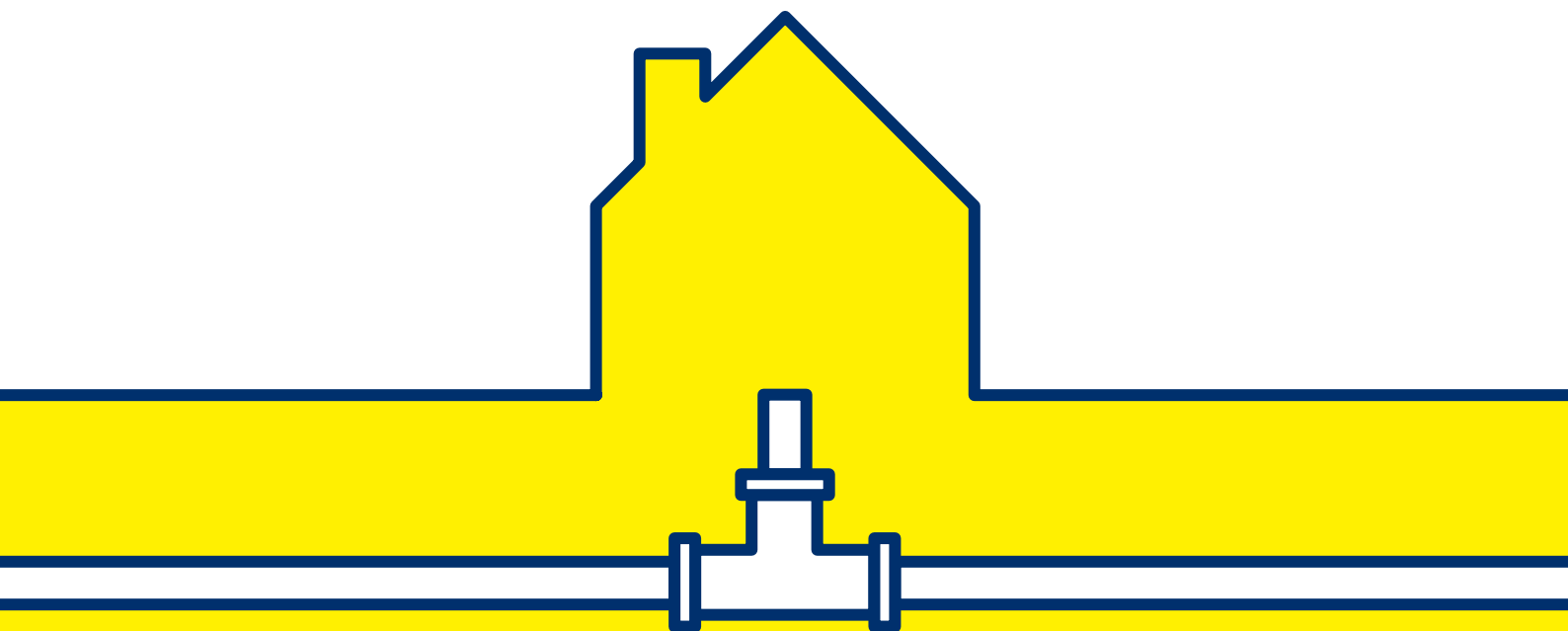
PPGU repair coupler S13,3=SN8

DN/OD	L
125	126
200	174
250	224
315	259





INSPECTION CHAMBERS





APPLICATION AREA

Non-accessible inspection shafts for underground, non-pressurised waste water pipes



APPROVAL

Germany, Czech Republic, Hungary, Romania, Belgium, Nordic. Check for possible exceptions



MATERIAL DESIGNATION

PP-Copolymer, PVC-U



STANDARD

EN 1852-1, EN 13598-1/EN 13598-2. Check for possible exceptions



NOMINAL RING STIFFNESS

max. installation = 4 m / max. installation Axedo 600 = 6 m



DIAMETER

Dia. 160, 200 mm with inlets/outlets 110, 160, 200 mm

Dia. 315, 355 and 400 mm with inlets/outlets 110, 160, 200 and 250 mm

Dia. 600 mm with inlets/outlets 160, 200, 250, 315 and 400 mm



COLOURS

RAL 8023, RAL 7037, Axedo 600 black



SEALING RING SYSTEM

BL, LSP (welded version) and SK-Fix seal

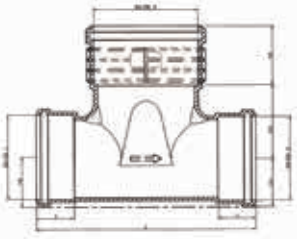


PACKAGING TYPES

On one-way pallets wrapped in film

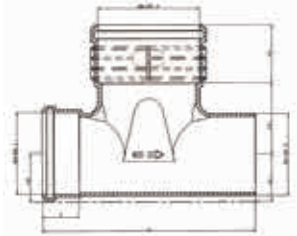
KGET PP Cleaning piece (FxF) without foot

DN/OD (mm)	1	2	3	h1	h2	h3	h4	t	L
110	200	110	64,0	67,0	140,6	113,4	56,1	380,0	
160	160	160	92,4	95,4	142,1	96,9	71,9	420,0	
160	200	160	92,4	95,4	140,6	113,4	71,9	420,0	
200	200	200	114,4	117,4	140,6	113,4	84,4	450,0	



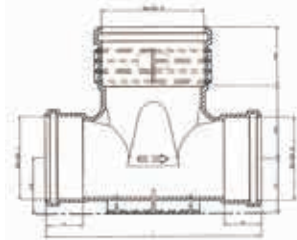
KGET PP Cleaning piece (MxF) without foot

DN/OD (mm)	1	2	3	h1	h2	h3	h4	t	L
110	200	110	64,0	67,0	140,6	113,4	56,1	380,0	
160	160	160	92,4	95,4	142,1	96,9	71,9	420,0	
160	200	160	92,4	95,4	140,6	113,4	71,9	420,0	
200	200	200	114,4	117,4	140,6	113,4	84,4	450,0	



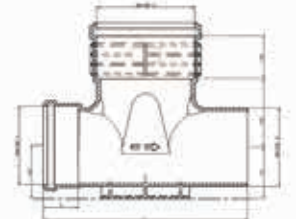
KGET PP Cleaning piece (FxF) with foot

DN/OD (mm)	1	2	3	h1	h2	h3	h4	t	L
110	200	110	74,0	77,0	140,6	113,4	56,1	380,0	
160	160	160	105,0	108,0	142,1	96,9	71,9	420,0	
160	200	160	105,0	108,0	140,6	113,4	71,9	420,0	
200	200	200	125,0	128,0	140,6	113,4	84,4	450,0	



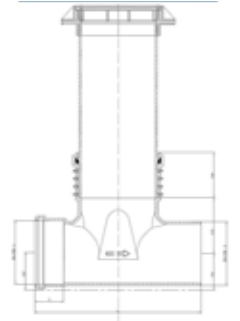
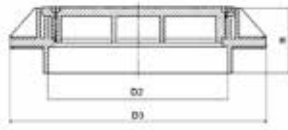
KGET PP Cleaning piece (MxF) with foot

DN/OD (mm)	1	2	3	h1	h2	h3	h4	t	L
110	200	110	64,0	67,0	140,6	113,4	56,1	380,0	
160	160	160	92,4	95,4	142,1	96,9	71,9	420,0	
160	200	160	92,4	95,4	140,6	113,4	71,9	420,0	
200	200	200	114,4	117,4	140,6	113,4	84,4	450,0	



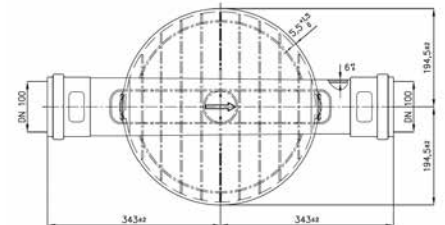
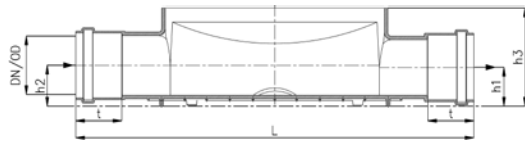
Plastic covers for following riser pipe diameters

DN/OD (mm)
160
200
250
315
400



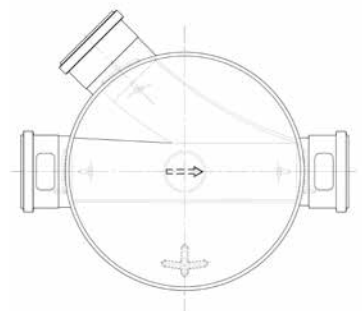
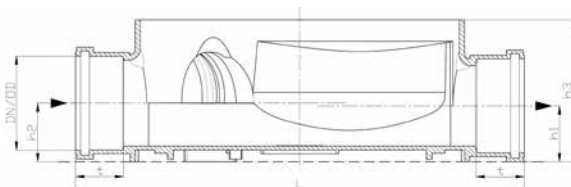
PP Inspection chamber lower section G=Straight DN/OD 400mm

DN/OD	t	h1	h2	h3	L
110	79	66,5	70	168	685
160	81	94	97,5	220,5	685
200	109	116,5	120	265	685



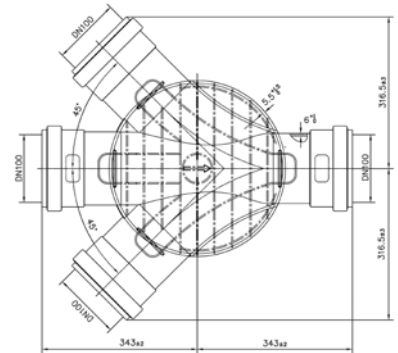
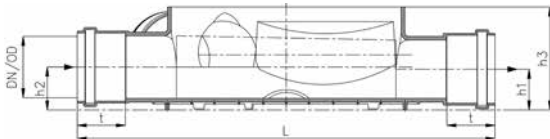
PP Inspection chamber lower section MR=Middle/Right DN/OD 400mm

DN/OD	t	h1	h2	h3	L
110	56	66,5	70	168	530



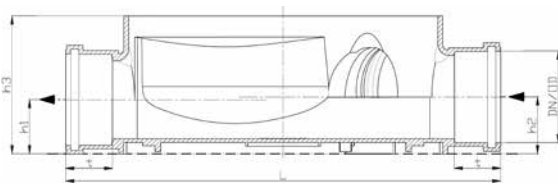
PP Inspection chamber lower section RML=Right/Middle/Left DN/OD 400mm

DN/OD	t	h1	h2	h3	L
110	79	66,5	70	168	685
160	81	94	97,5	220,5	685
200	109	116,5	120	265	685



PP Inspection chamber lower section ML=Middle/Left DN/OD 400mm

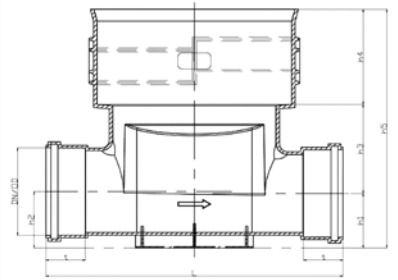
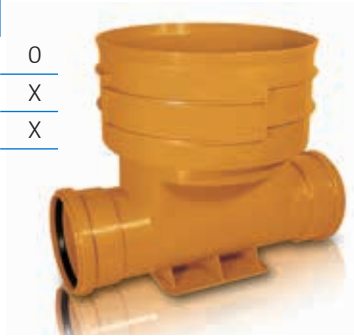
DN/OD	t	h1	h2	h3	L
110	56	66,5	70	168	530



PP Inspection chamber Type G for corrugated pipe DN/OD 355 (with foot)

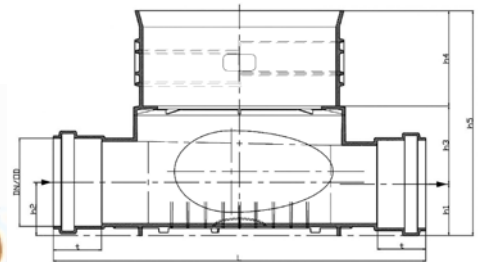
DN/OD	h1	h2	h3	h4	h5	t	L
110*	66,5	70	119,0	175	360,5	79,0	685
160	100	103,5	163,5	175	438,5	74,0	550
200	120	123,5	163,5	175	458,5	84,5	570

X = one-piece 0 = welded
 *only available without foot



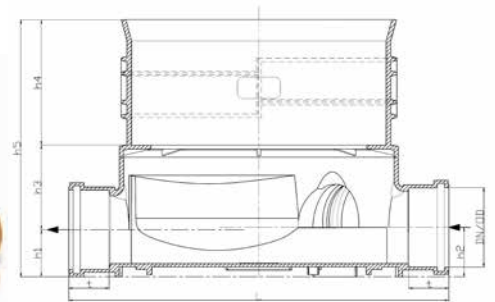
PP Inspection chamber Type RML for corrugated pipe DN/OD 355

DN/OD	h1	h2	h3	h4	h5	t	L
110	66,5	70,0	119	175	360,5	79	685
160	94,0	97,5	140	175	409,0	91	685
200	116,5	120,0	165	175	456,5	109	685



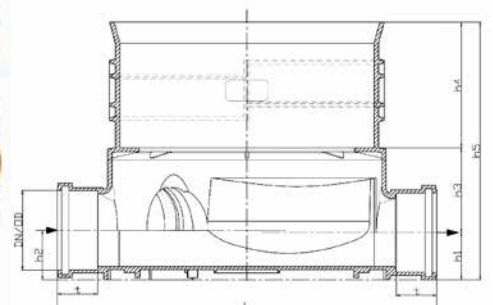
PP Inspection chamber Type ML for corrugated pipe DN/OD 355

DN/OD	h1	h2	h3	h4	h5	t	L
110	66,5	70,0	119	175	360,5	56	530



PP Inspection chamber Type MR for corrugated pipe DN/OD 355

DN/OD	h1	h2	h3	h4	h5	t	L
110	66,5	70,0	119	175	360,5	56	530

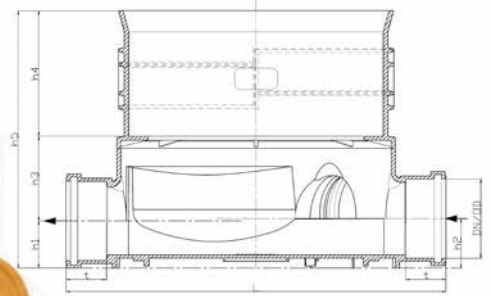
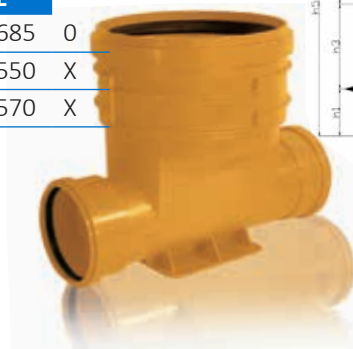


PP Inspection chamber Type G DN/OD 315 (with foot)

DN/OD	h1	h2	h3	h4	h5	t	L
110*	66,5	70	122,0	322	510,5	79,0	685 0
160	100	103,5	163,5	160	423,5	74,0	550 X
200	120	123,5	163,5	160	443,5	84,5	570 X

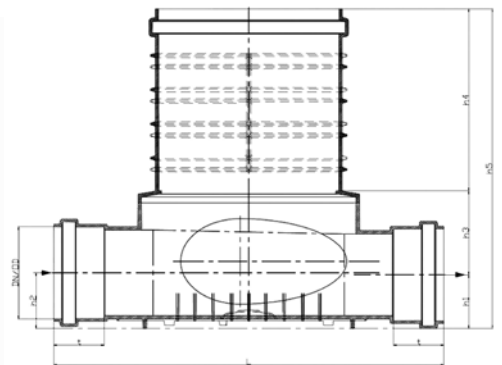
X = one-piece 0 = welded

*only available without foot



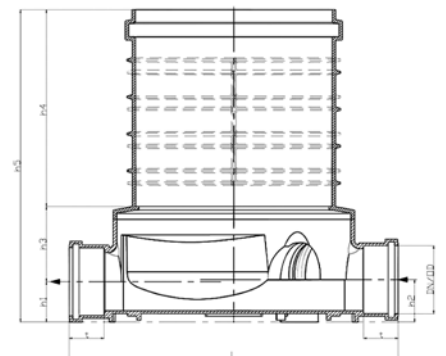
PP Inspection chamber Type RML DN/OD 315

DN/OD	h1	h2	h3	h4	h5	t	L
110	66,5	70,0	119	175	360,5	79	685
160	94,0	97,5	140	175	409,0	91	685
200	116,5	120,0	165	175	456,5	109	685



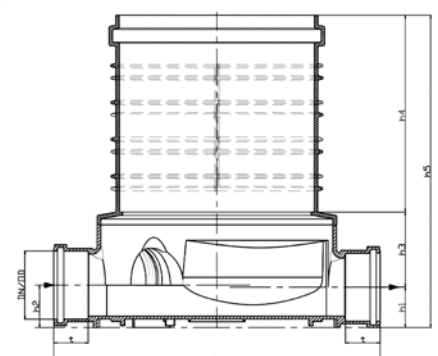
PP Inspection chamber Type ML DN/OD 315

DN/OD	h1	h2	h3	h4	h5	t	L
110	66,5	70,0	122	322	510,5	56	530



PP Inspection chamber Type MR DN/OD 315

DN/OD	h1	h2	h3	h4	h5	t	L
110	66,5	70,0	122	322	510,5	56	530

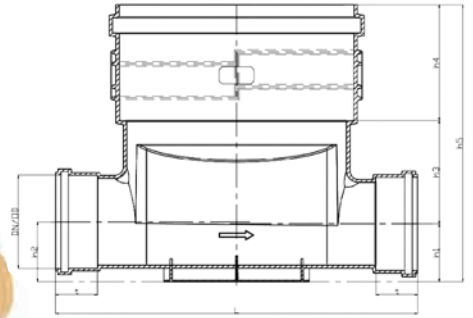


PP Inspection chamber Type G DN/OD 400 (with foot)

DN/OD	h1	h2	h3	h4	h5	t	L
110*	66,5	70	119,0	327	512,5	79,0	685 0
160	100	103,5	178,5	203	481,5	74,0	630 x
200	123,5	97,5	178,5	203	501,5	84,5	650 x
250	148,5	120,0	178,5	203	526,5	112	700 x

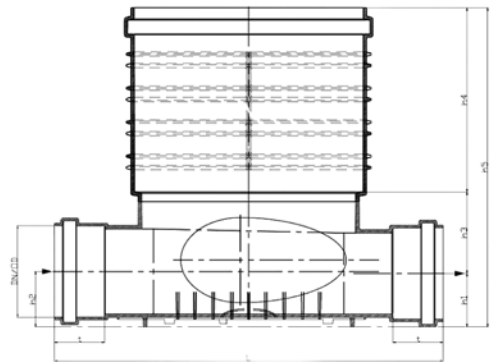
X = one-piece 0 = welded
 *only available without foot

Also available with inlet and outlet 315 mm



PP Inspection chamber Type RML DN/OD 400, 110 welded, 160+200 one piece

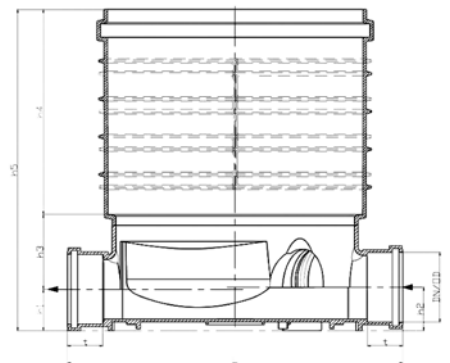
DN/OD	h1	h2	h3	h4	h5	t	L
110	66,5	70	119,0	327	512,5	79,0	685
160	91,5	95	118,5	203	413	74,0	600
200	113,5	117	143,5	203	460	84,5	630



Also available with inlet and outlet 250 and 315 mm

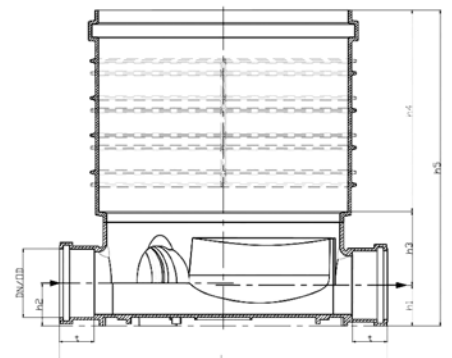
PP Inspection chamber Type ML DN/OD 400

DN/OD	h1	h2	h3	h4	h5	t	L
110	66,5	70,0	119	327	512,5	56	530



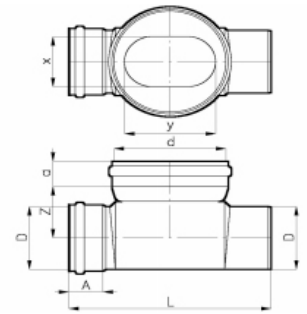
PP Inspection chamber Type MR DN/OD 400

DN/OD	h1	h2	h3	h4	h5	t	L
110	66,5	70,0	119	327	512,5	56	530



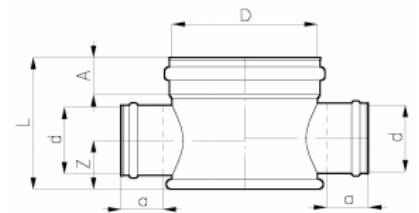
PVC Inspection chamber FFM

D	d	L	A	a	Z	x	y
250	400	700	110	100	205	200	325
315	400	720	120	100	230	200	325



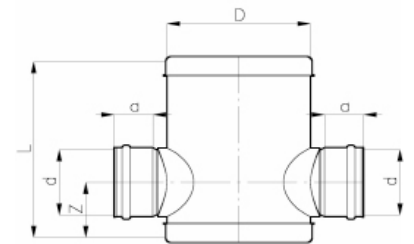
PP Access chamber FFF

D	d	L	A	a	Z
315	125	362	112	70	98
315	160	362	112	76	115
315	200	362	112	86	135



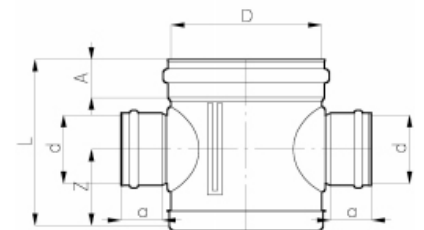
PVC Access chamber with cover

Class	D	d	L	a	Z
SDR41	250	125	600	75	190



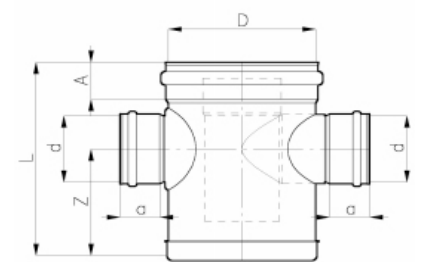
PVC Access chamber with baffle FFF

D	d	L	A	a	Z
315	125	390	80	70	180



PVC Access chamber with smell trap FFF

D	d	L	A	a	Z
315	125	395	80	70	205
315	160	470	80	80	255



Axedo

Features and benefits:

- Manufactured to EN 13598-2 and EN 476
- Quick and easy to install
- Lightweight and tight fitting
- PP material offers excellent resistance to corrosion and chemical components
- Fully recyclable after use
- For pipe diameters from 160 up to 400 mm
- Installation depth max 6 mtr.
- Sockets allow 7,5° movement in all directions



With many different configuration options, the Axedo 600 is one of the most flexible inspection chambers.

Other configurations possible upon request.



Axedo 600 MM

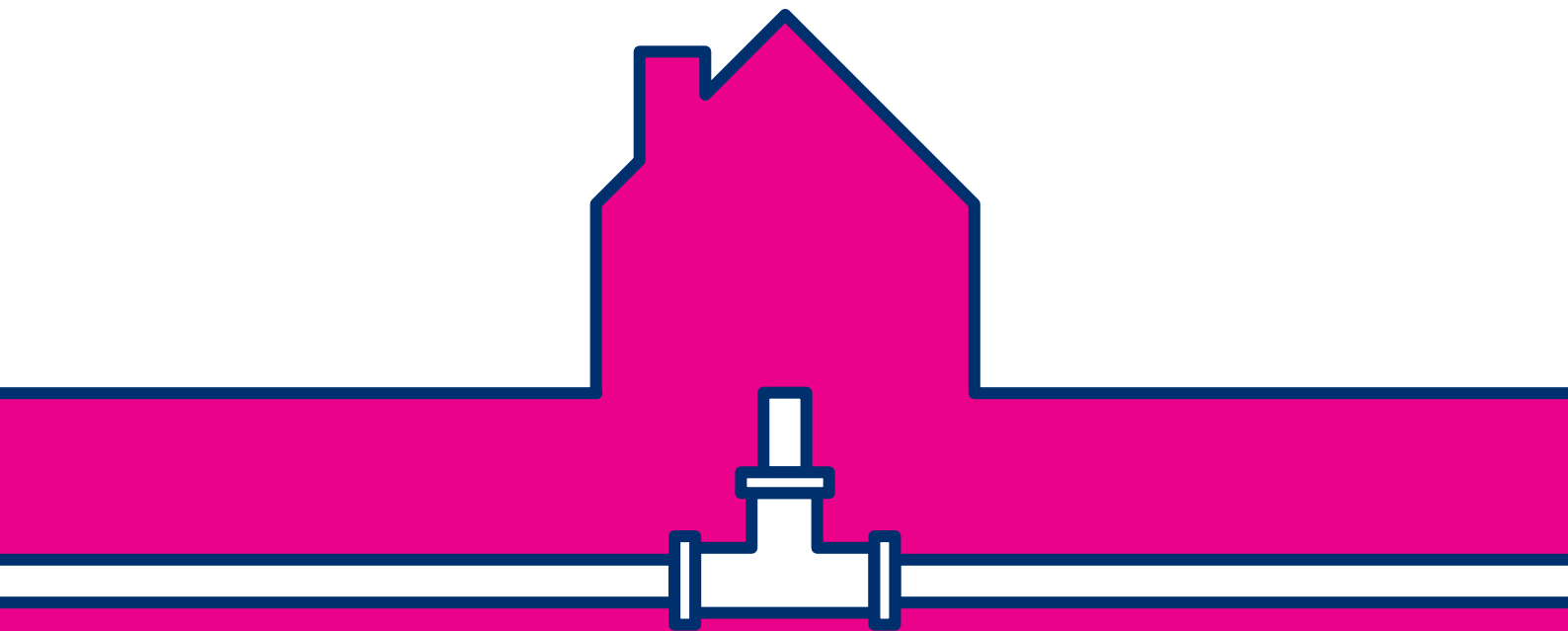
D (mm)	160	200	250	315	400
0 - 180°	✓	✓	✓	✓	✓
0 - 150°	✓	✓	✓	✓	
0 - 120°	✓	✓	✓	✓	
0 - 90°	✓	✓	✓	✓	
T	✓	✓	✓	✓	
Cross	✓	✓	✓	✓	



Sockets allow 7,5° movement in all directions



PVC SANITARY FITTINGS



**APPLICATION AREA**

Fittings for sanitary, non-pressurised waste water pipes [PVC-U]

**APPROVAL**

ISO-9001

**MATERIAL DESIGNATION**

PVC-U

**STANDARD**

DIN 19531, EN-1329-1

**NOMINAL RING STIFFNESS**

SN4

**DIAMETER**

DN/OD 32 mm - 160 mm

**COLOURS**

Grey RAL 7037, special colours available on request

**SEALING RING SYSTEM**

BL lip seal / HMS lip seal

**PACKAGING TYPES**

Cartons on one-way pallets

KAB Bend

Dia. (mm)	15°	30°	45°	67°	87°
23	+	+	+	+	+
40	+	+	+	+	+
50	+	+	+	+	+
63	-	-	+	-	+
75	+	+	+	+	+
90	-	-	+	-	+
100	-	-	+	-	+
110	+	+	+	+	+
125	+	+	+	+	+
160	+	+	+	+	+



KAEA T-Piece

Dia. (mm)	45°	67°	87°
32 / 32	+	-	+
40 / 32	+	-	+
40 / 40	+	+	+
50 / 32	+	-	-
50 / 40	+	+	+
50 / 50	+	+	+
63 / 63	+	-	-
75 / 50	+	+	+
75 / 75	+	+	+
110 / 50	+	+	+
110 / 63	+	-	-
110 / 75	+	+	+
110 / 110	+	+	+
125 / 110	+	-	+
125 / 125	+	-	+
160 / 110	+	+	+
160 / 125	+	+	+
160 / 160	+	+	+



KAR Excentric reducer

Dia. (mm)
40 x 32
50 x 32
50 x 40
63 x 50
75 x 50
110 x 50
110 x 63
110 x 75
125 x 110
160 x 110
160 x 125



KAR Centric reducer

Dia. (mm)
32 x 40



KAM Socket-plug

Dia. (mm)
32, 40, 50, 63, 75, 110, 125, 160



KAU Repair coupler

Dia. (mm)
32*
40*
50*
63
75
110
125
160



*also available in thick-walled version

KAMM Double coupler

Dia. (mm)
32
40
50
75
110
125
160



KARE Cleaning pieces

Dia. (mm)
40
50
75
110
125



KBA Floor drain

Dia. (mm)
125 x 75 x 50
125 x 75 x 63





PP-HT FITTINGS



**APPLICATION AREA**

Fittings for sanitary, non-pressurised waste water pipes [PP]

**APPROVAL**

Hungary

**MATERIAL DESIGNATION**

Polypropylene

**STANDARD**

EN-1451-1

**NOMINAL RING STIFFNESS**

SN4

**DIAMETER**

DN/OD 32 mm - 110 mm

**COLOURS**

Grey RAL 7037, special colours available on request

**SEALING RING SYSTEM**

BL lip seal

**PACKAGING TYPES**

Cartons on one-way pallets

HTB Bend

Dia. (mm)	15°	30°	45°	67°	87°
32	-	-	+	+	+
40	+	+	+	+	+
50	+	+	+	+	+
75	+	+	+	-	+
110	+	+	+	+	+



HTEA T-Piece (M x F x F)

Dia. (mm)	45°	67°	87°
32/ 32	+	+	+
40/ 40	+	+	+
50/ 32	+	-	-
50/ 40	+	-	+*
50/ 50	+	+	+
75/ 40	+	-	+
75/ 50	+	-	+*
75/ 75	+	-	+
110/ 40	+	-	-
110/ 50	+	+	+*
110/ 75	+	-	-
110/ 110	+	+	+*
125/ 125	+	-	+
160/ 110	+	-	+
160/ 125	+	-	+
160/ 160	+	-	+



HTEA T-Piece (F x F x F)

Dia. (mm)	45°	87°
50/ 40	-	+*
75/ 40	+	+
110/ 40	+	+
110/ 50	+	+*
110/ 75	+	-
110/ 110	-	+*



* Swept version

* Swept version

HTDA Double branch

Dia. (mm)	
50 x 50 x 50	45°
50 x 50 x 50	87°
110 x 50 x 50	45°
110 x 110 x 110	45°
110 x 110 x 110	87°



HTU Repair coupler

Dia. (mm)
32
40
50
110



HTMM Double coupler

Dia. (mm)
32
40
50
110



HTR Reducer

Dia. (mm)
40 x 32
50 x 32
50 x 40
75 x 50
110 x 50
110 x 50 (short version)
110 x 75
160 x 110
160 x 125



HTM Socket plug

Dia. (mm)
32
40
50
110
160



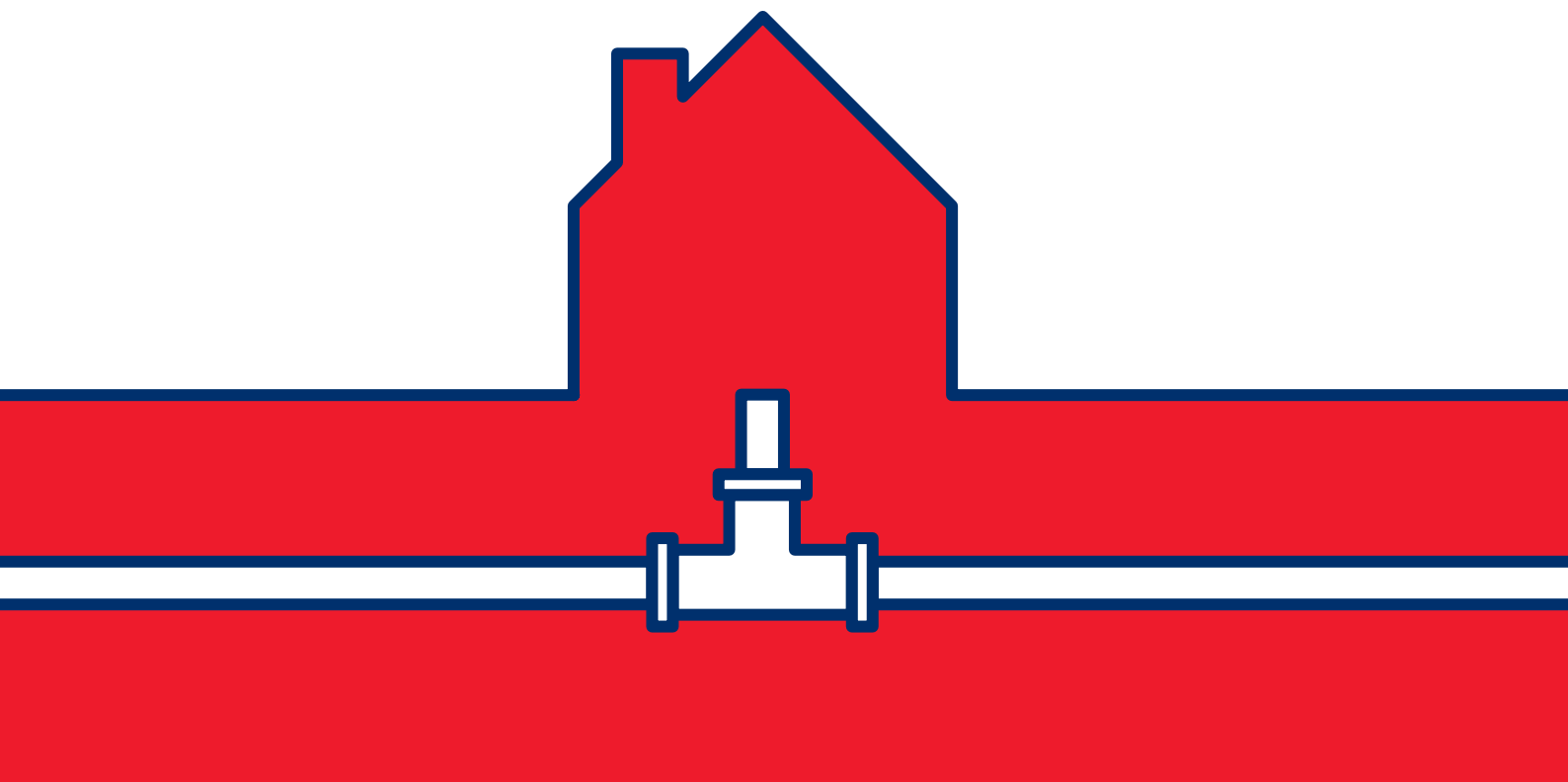
HTRE cleaning piece

Dia. (mm)
50
110
160





PE HD SEWAGE FITTINGS





APPLICATION AREA

Fittings for underground, non-pressurised waste water pipes [PE]



APPROVAL

Germany



MATERIAL DESIGNATION

Polyethylene - HD (high density)



STANDARD

EN 12666-1 Application UD



NOMINAL RING STIFFNESS

SDR 26 = SN 4



DIAMETER

DN/OD 110 mm - 200 mm



COLOURS

Black



SEALING RING SYSTEM

SX lip seal

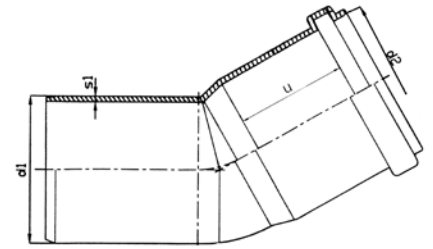


PACKAGING TYPES

Cartons on one-way pallets

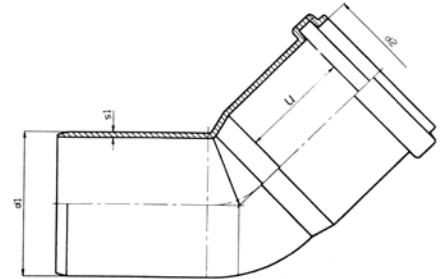
PEGB Bend 30°

DN/OD (mm)	d1	d2	u ^{min}	s1
110	110	111,1	83	4,2
125	125	126,3	85	4,8
160	160	161,6	88	6,2



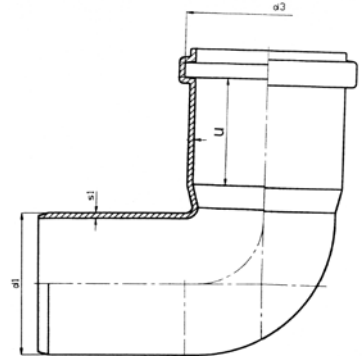
PEGB Bend 45°

DN/OD (mm)	d1	d2	u ^{min}	s1
110	110	111,1	83	4,2
125	125	126,3	85	4,8
160	160	161,6	88	6,2



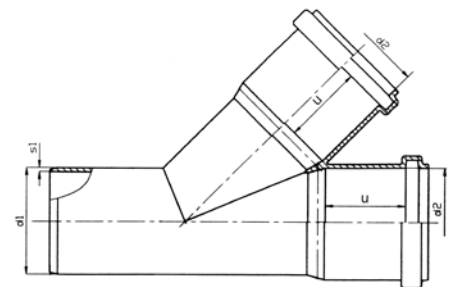
PEGB Bend 88,5°

DN/OD (mm)	d1	d2	u ^{min}	s1
110	110	111,1	83	4,2
125	125	126,3	85	4,8
160	160	161,6	88	6,2



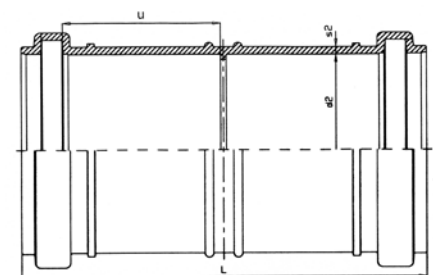
PEGEA T-Piece 45°

DN/OD (mm)	d1	d2	u ^{min}	s1
110/110	110	111,1/111,1	83/83	4,2
125/125	125	126,3/126,3	85/85	4,8
160/110	160	161,6/111,1	88/83	6,2
160/160	160			



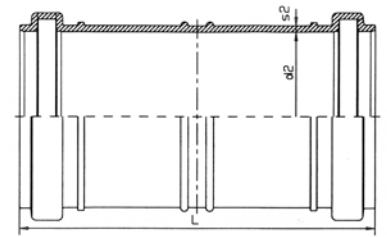
PEGMM Double coupler

DN/OD (mm)	d1	s1	u ^{min}	L
110	111,1	3,8	91	233
125	126,3	4,4	95	245
160	161,6	5,6	100	266
200	202,2	7,0	100	288



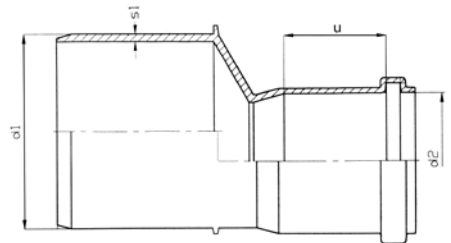
PEGU Repair coupler

DN/OD (mm)	d1	s2	L
110	111,1	3,8	233
125	126,3	4,4	245
160	161,6	5,6	266
200	202,2	7,0	288



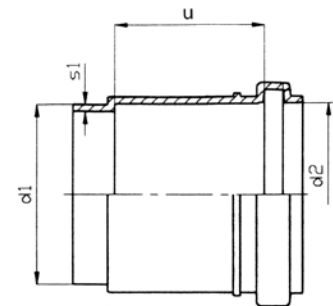
PEGR Excentric reducer

DN/OD (mm)	d1	d2	u ^{min}	s1
110/125	125	111,1	83	4,8
110/160	160	111,1	83	6,2
125/160	160	126,3	85	6,2



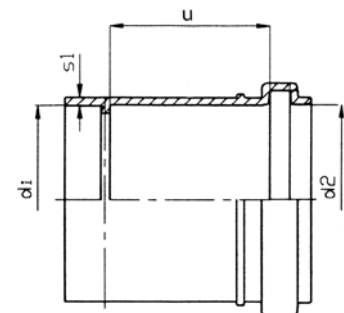
PEGMS Butt welding socket

DN/OD (mm)	d1	d2	u ^{min}	s1
110	110	111,1	91	4,2
125	125	126,3	95	4,8
160	160	161,6	100	6,2
200	200	202	100	7,7



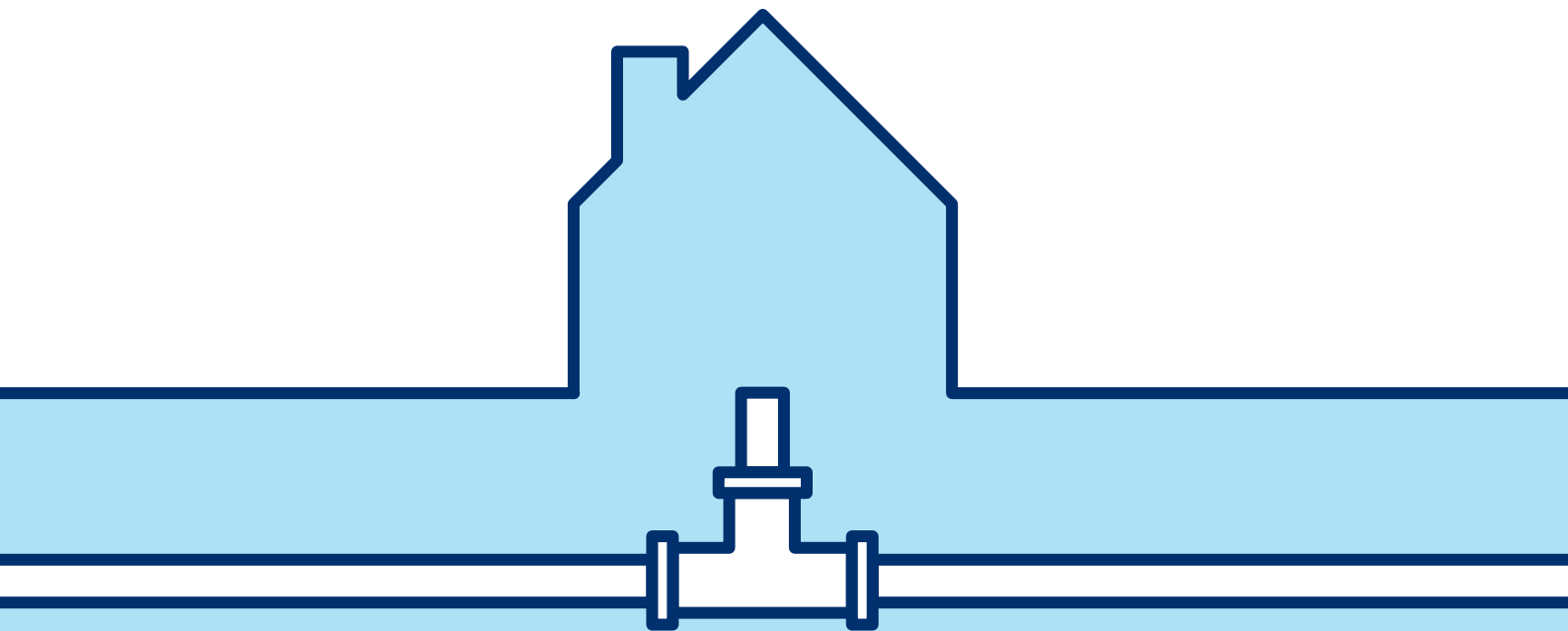
PEGMR Rotation welding socket

DN/OD (mm)	d1	d2	u ^{min}	s1
110	110,1	111,1	91	4,2
125	125,1	126,3	95	4,8
160	160,1	161,6	100	6,2
200	200,1	202,2	100	7,7





SHAFT CONNECTORS





APPLICATION AREA

Pipe connectors to concrete manholes or masonry; wall penetrations



APPROVAL

Germany, Netherlands, Belgium, Hungary and Romania
Check for possible exceptions



MATERIAL DESIGNATION

Polystyrol PS + S/B, Acrylnitril-Butadine-Styrol (ABS), PVC-U



STANDARD

Test and monitoring regulation HR 3.23 of the SKZ, BRL9206



DIAMETER

DN 100 - 630 mm



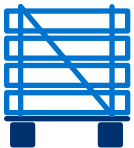
COLOURS

White, beige, black, Grey Ral 7037, orange brown Ral 8023



SEALING RING SYSTEM

BL lip seal / sliding wedge seals / SK fix seal



PACKAGING TYPES

in packs or in cartons, or on one-way paletts wrapped in shrink-foil in different pcs/unit

BKK-A RING (with stop) for clay pipe connection with socket K and S to connection system C

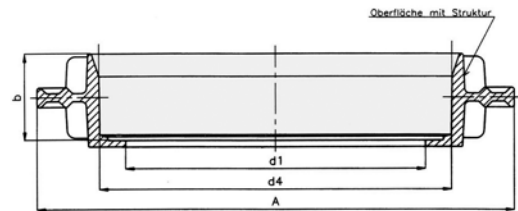
Advantages of the BKK-A ring: the stop is matched to the clay pipe inner diameter, possibility of paving gutters without additional gauge. No need for additional work in the facing area of the gutter. The dimensional accuracy of the BKK-A ring,

especially the dimension d_4 , must be ensured during shaft production. DN 200, 250 and 300 from S/B, DN 400, 500 and 600 from ABS/GF.

Suitable for clay pipes to **DIN EN 295**.

BKK-A-Ring for clay pipe connections

DN	d1	d2	A	b	TKL
200 N	202,0	260,0	340,0	54,0	160
200 H	202,0	275,0	363,0	54,0	240
250 N	252,0	317,5	398,0	54,0	160
250 H	252,0	341,5	423,0	54,0	240
300 N	302,0	371,5	453,0	54,0	160
300 H	302,0	398,5	483,0	54,0	240
400 N	400,0	507,5	589,0	54,0	160
400 H	400,0	515,5	597,0	54,0	200
500 N	499,0	605,0	690,0	75,0	120
500 H	499,0	637,0	730,0	75,0	160
600 N	600,0	720,0	825,0	80,0	95
600 H	600,0	758,0	845,0	80,0	160

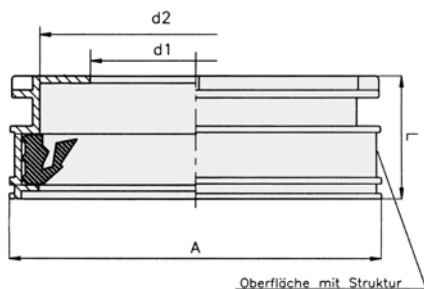


KGSM shaft connector for clay pipe connection with socket L to connection system F

Very good adhesion to the surrounding concrete due to the outer shape and surface texture, providing a waterproof connection. High inherent stability, low weight. Stop as guide for gutter installation. Good cleaning possibility due to loosely inserted seals.

KGSM for clay pipe connection

DN	d1	d2	A	b	TKL
150	152	199	230	70	34
200	201	255	293	80	160



TECHNICAL ADVANTAGES:

- Direct connection of clay pipes DN 150 and 200, insert sleeve L
- Very high inherent stability of the KGSM
- Tight connection to the requirements of DIN EN 1917 and DIN V 4034-1
- Easy installation for shaft bottom production, stop as guide for gutter installation, and easy pipe-fitting on the construction site.
- Cost-saving due to the omission of transition components such as jointed adapter pieces or fitting rings for pipe connection.

Suitable for clay pipes to **DIN EN 295**.

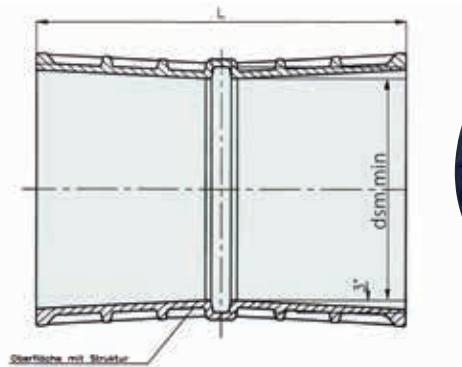
KGF shaft connector for PVC-KG pipe connection

Very good waterproof adhesion to the surrounding concrete due to the profiling and textured surface. Easy introduction of the pipe guaranteed (angle $\pm 3^\circ$). High impact resistance and low weight. The seals approved for KG pipes are used.

Suitable for PVC-drainage pipes to **DIN EN 1401-1**. Information on the availability of special length of KGF shaft connectors is available on request.

KGF Shaft connector

DN/OD	dsm _{min}	L
110	110,4	80/110/240
125	125,4	80/110/240
160	160,5	65/80/90/110/240
200	200,6	80/110/240
250	250,8	80/110/240
315	316,0	80/110/240
400	401,2	80/110/240
500	501,5	80/110/240



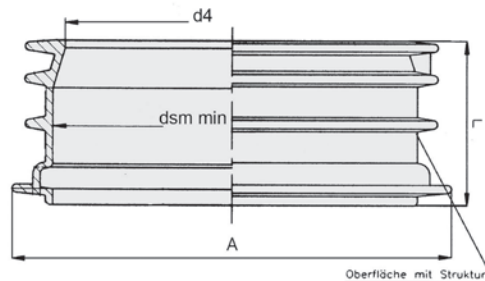
KGE Shaft connector for PVC-KG pipe connection

Very good adhesion to the surrounding concrete due to the outer shape and surface texture, providing a waterproof connection. Low weight.

The seals approved for KG pipes are used. Suitable for PVC-drainage pipes to **DIN EN 1401-1**.

KGE for PVC-KG pipe connections

DN/OD	A	dsm _{min}	d4	L
110	140	110,4	103,4	67
125	155	125,4	118,4	72
160	210	160,5	152,2	86
200	239	200,6	190,3	103



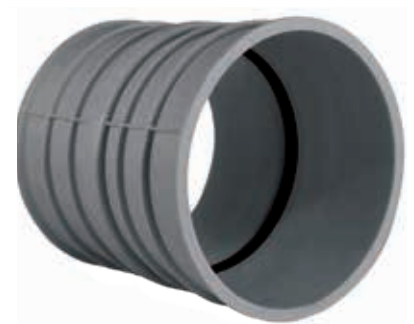
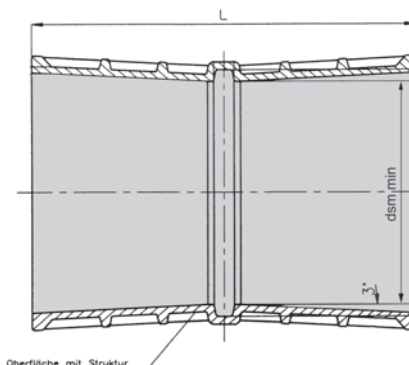
PEGSF shaft connector for PE-HD pipe connection

Very good waterproof adhesion to the surrounding concrete due to the profiling and textured surface. Easy introduction of the pipe guaranteed (angle $\pm 3^\circ$).

High impact resistance and low weight. The seals approved for KG pipes are used. Suitable for PE-HD drainage pipes to **DIN EN 12666**.

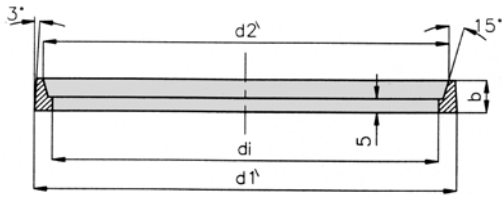
KGE for PVC-KG pipe connections

DN/OD	dsm _{min}	L
110	111,1	80/110/240
125	126,3	80/110/240
160	161,6	80/90/110/240
200	202,2	80/110/240



Fitting Ring / Fixing Aid for KGF and PEGSF
length 90 and 110 mm

DN/OD	d1	d2	di	b
110	114,7	110,3	104,0	11
125	129,6	125,3	119,0	11
160	164,4	160,4	152,8	12
200	204,4	200,4	191,0	14



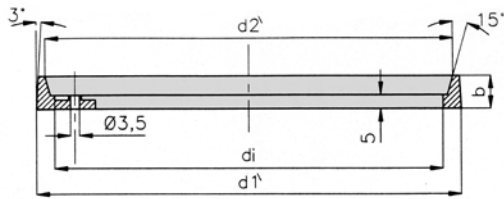
Fitting ring for KGF and PEGSF Shaft connector and extension



The fitting ring prevents the penetration of concrete between the shaft connector and core during production of the shaft. It then serves as a guide for the installation of the gutter. The accurate adjustment of the ring to the inner pipe diameter ensures a smooth transition from the shaft gutter to the PVC-KG or PE-HD drainage pipe.

Fitting Ring / Fixing Aid for KGF and PEGSF
length 240mm and extension

DN/OD	d1	d2	di	b
110	121,7	110,3	104,0	11
125	136,6	125,3	119,0	11
160	171,3	160,4	152,8	12
200	211,2	200,4	191,0	14



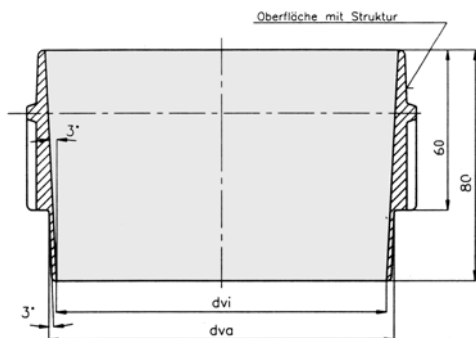
Fixing aid for KGF and PEGSF Shaft connector and extension



The fixing aid is attached accurately to the formwork by means of nails. The shaft connector is then placed on the fixing ring and therefore positioned accurately. The fixing aids are reusable.

Extension for KGF and PEGSF

DN/OD	dvi	dva
110	113,4	121,8
125	128,3	136,7
160	163,1	171,5
200	203,0	211,4



Extension 60 mm for KGF and PEGSF length 240 mm

The same favourable material characteristics and connection effects as the KGF-S/B shaft connector. Easy extension of the shaft connector in steps of 60 mm to 300 mm, 360 mm etc.



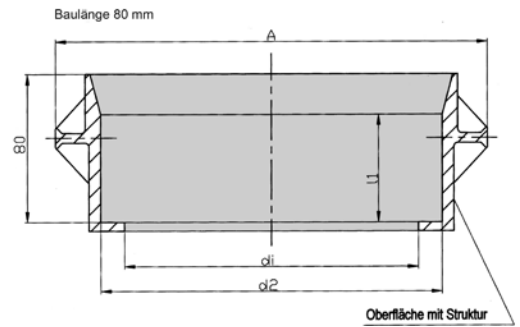
VBR shaft connector for corrugated pipes

High inherent stability, very good adhesion to the surrounding concrete and safety against water penetrating behind due to the proven shape and surface texture.
Stop for gutter attachment.

Suitable for connecting different corrugated pipes from several pipe producers. We gladly inform you about the possibilities for all VBR Shaft connectors listed.

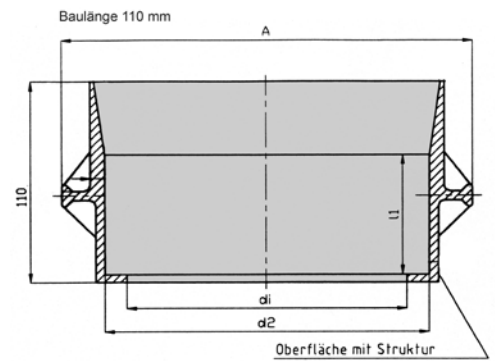
VBR shaft connector length 80mm

DN	di	d2	l1	A
150	151	175,5	55	222



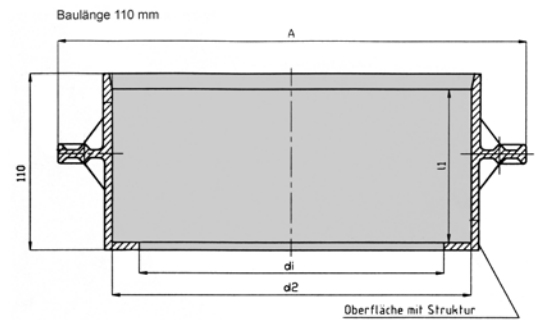
VBR shaft connector length 110mm

DN	di	d2	l1	A
150	151	175,5	65	222
200	201	237,1	75	309
250	251	295,0	80	367
300	301	348,3	95	422
350	346	401,3	95	477



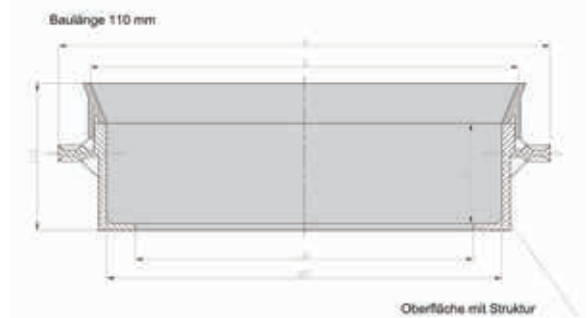
VBR-Hegler pipe connector length 110mm (color grey)

DN	di	d2	l1	A
300	301	354,5	70	428



VBR black/white shaft connector length 110mm

DN	di	d2	l1	D	A
200	201	237,1	75	256	309
250	251	295,0	75	322	367
300	301	348,3	75	377	422
350	346	401,3	75	430	477

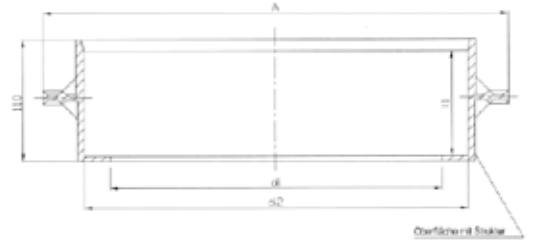


VBR PRAGMA Shaft connector for PP-Pragma 10 Pipe.

For the size DN 150 Pragma pipe, our standard VBR Shaft Connector (previous page) can be used.

VBR PRAGMA shaft connector length 110mm

DN	d _i	d ₂	l ₁	A
200	201	230,5	90	309
250	251	287,6	90	367
300	301	346,4	90	422
400	402	461,5	95	534



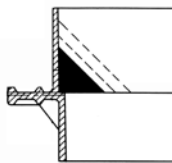
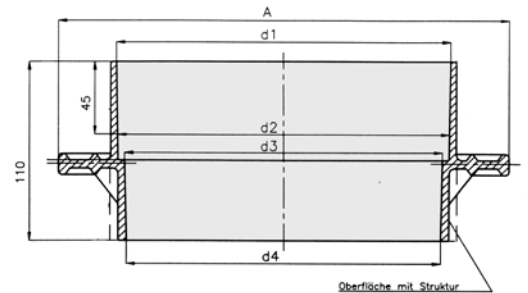
UNI-F Universal shaft connector for cast iron pipes, SML pipe, GFK pipe, PE-HD pipe

One single part, suitable for various pipe types. Different sealing rings compensate for the differences in the pipe outer diameters.

Through cost-efficient mounting, you can react quickly and flexibly to the special requirements of your customers.

UNI-F universal shaft connector

DN	d ₁	d ₂	d ₃	d ₄	A
150	205,1	202,0	186,0	185,0	245,0
200	251,2	248,0	234,2	232,4	321,2
250	303,5	300,4	289,3	287,6	373,5
300	354,9	351,8	340,7	339,0	426,9
400	453,0	450,0	437,0	435,0	534,0



The gutter must be attached in the shaft according to the inner diameter of the type of pipe to be connected. All pipe types must be provided with a bevel at the ends in accordance with the relevant works standard before insertion into the shaft connector, in order to prevent damage to the seal.

Stop guides for gutter attachment and adapters for automatic installation with your existing retaining cores are available on request.

Information on seal selection can be found in the table on the next page.



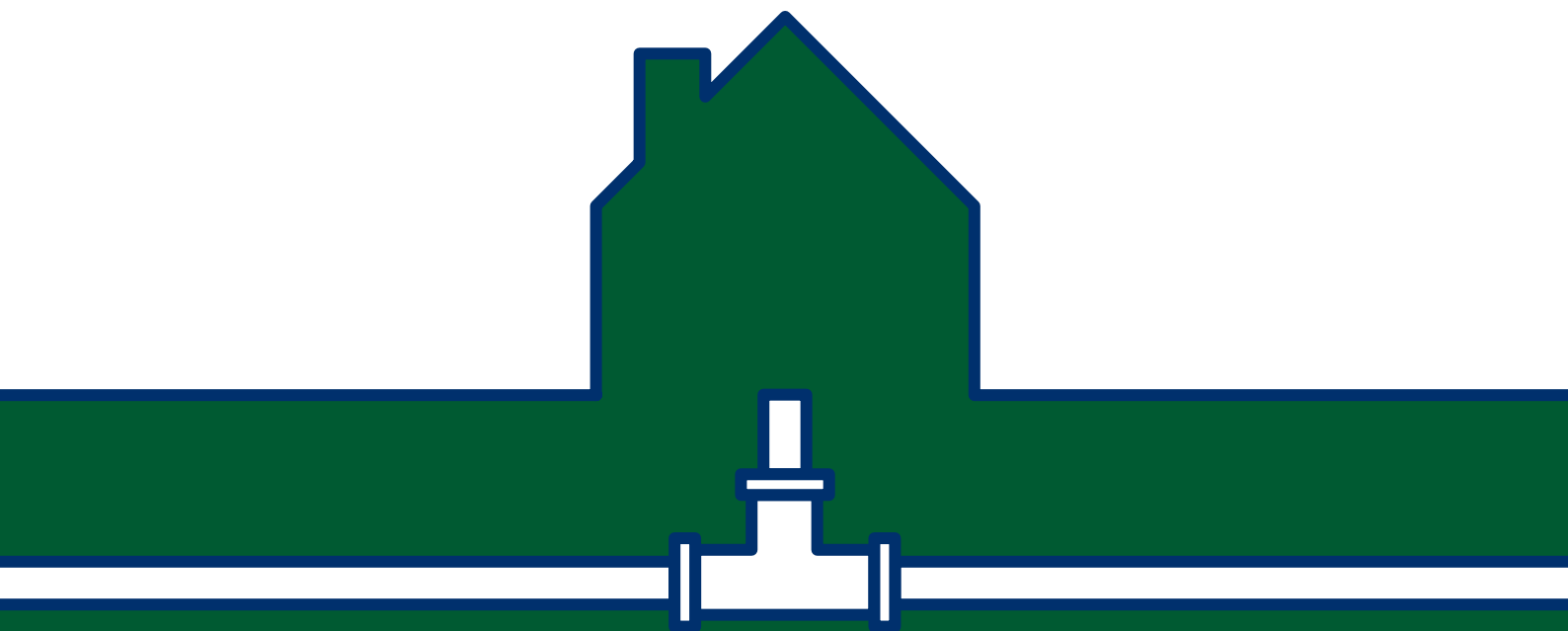
SEAL SELECTION FOR UNIVERSAL SHAFT LINING UNI-F

seal selection »CORDES CK - 89« Quality: SBR

Nominal diameter DN 150	SEAL FOR	PE-HD PIPE DIN 8074/8075 DIN EN 12666	D.GUSS PIPE DIN EN 598	PE-HD PIPE DIN 8074/8075	
		SML PIPE DIN EN 877	GFK PIPE DIN 16868/69 Serie 2 DIN 19565		
	PIPE OUTER DIAMETER	158,0 – 162,0 mm	166,8 – 171,0 mm	180,0 – 181,7 mm	
	SEAL SIZE / CUT LENGTH	28/590	23/595	14/625	
Nominal diameter DN 200	SEAL FOR	PE-HD PIPE DIN 8074/8075 DIN EN 12666	SML PIPE DIN EN 877	D.GUSS PIPE DIN EN 598	PE-HD PIPE DIN 8074/8075
				GFK PIPE DIN 16868/69 Serie 2 DIN 19565	
	PIPE OUTER DIAMETER	200,0 – 201,8mm	208,0 – 212,0mm	219,0 – 223,0mm	225,0 – 227,1mm
	SEAL SIZE / CUT LENGTH	30/750	26/750	20/750	17/760
Nominal diameter DN 250	SEAL FOR	PE-HD PIPE DIN 8074/8075 DIN EN 12666	D.GUSS PIPE DIN EN 598	PE-HD PIPE DIN 8074/8075	
			GFK PIPE DIN 16868/69 Serie 2 DIN 19565		
			SML PIPE DIN EN 877		
	PIPE OUTER DIAMETER	250,0 – 252,3mm	270,9 – 276,5 mm	280,0 – 282,6mm	
	SEAL SIZE / CUT LENGTH	30/890	20/940	14/950	
Nominal diameter DN 300	SEAL FOR	PE-HD PIPE DIN 8074/8075 DIN EN 12666	D.GUSS PIPE DIN EN 598	SML PIPE DIN EN 877	
			GFK PIPE DIN 16868/69 Serie 2 DIN 19565		
	PIPE OUTER DIAMETER	315,0 – 317,9mm	322,7 – 327,0 mm	323,5 – 328,5mm	
	SEAL SIZE / CUT LENGTH	26/1070	20/1090	19/1090	
Nominal diameter DN 400	SEAL FOR	PE-HD PIPE DIN 8074/8075 DIN EN 12666	GFK PIPE DIN 16868/69 Serie 2 DIN 19565	D.GUSS PIPE DIN EN 598	
				SML PIPE DIN EN 877	
	PIPE OUTER DIAMETER	400,0 – 403,8mm	426,0 – 427,6 mm	425,5 – 431,0mm	
	SEAL SIZE / CUT LENGTH	36/1340	17/1400	16/1400	



VENTILATION COMPONENTS





APPLICATION AREA

Wall cover for fume extraction, vent cowls and flashings for flat roofs



MATERIAL DESIGNATION

High impact-resistant polystyrol S/B, PVC-U



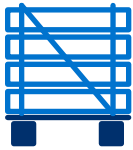
DIAMETER

80 - 160 mm, 50 t/m 400mm



COLOURS

White, grey, fawn brown, mocha

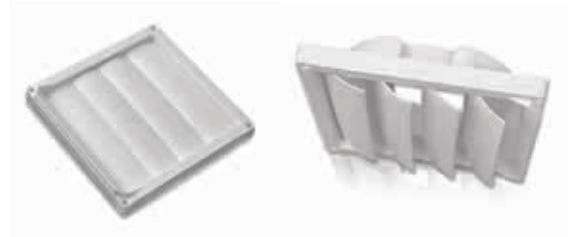


PACKAGING TYPES

Cartons on one-way pallets

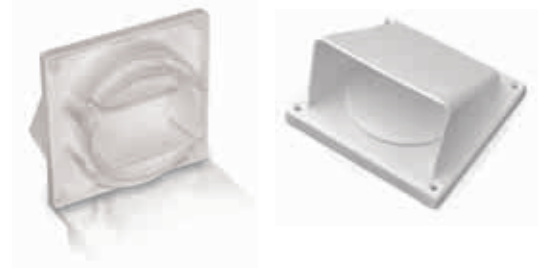
Universal louvre flap

- with drip fitting, self-acting louvres



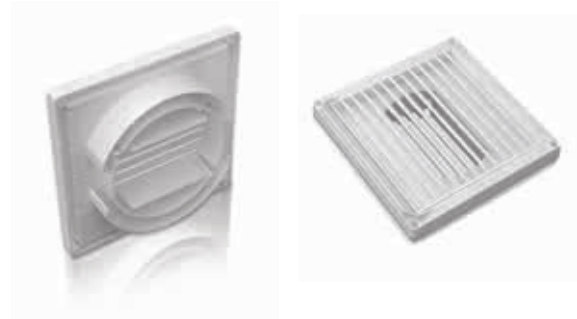
9 Waste air hood with non-return flap

- Connection possibilities for round diameter 100 mm and round diameter 125 mm
- Flat Duct 110 x 55 mm
- Outer dimensions 150 x 150 mm
- Colours: White, grey, fawn brown, mocha



Universal Louvre grille

- Connection possibilities for round diameter 100 mm and round diameter 125 mm
- Flat duct 110 x 55 mm
- Outer dimensions 150 x 150 mm
- Colours: White, grey, fawn brown, mocha



Reducer of polystyrol

- Connection possibilities for round diameter 100 mm and round diameter 125 mm
- Flat duct 110 x 55 mm
- Outer dimension 150 x 150mm
- Colours: White, grey, fawn brown, mocha

Reducer

D (mm)

80/110

110/110

110/125

125/160



Hose connector

D (mm)

110

125



Wall connector

D (mm)

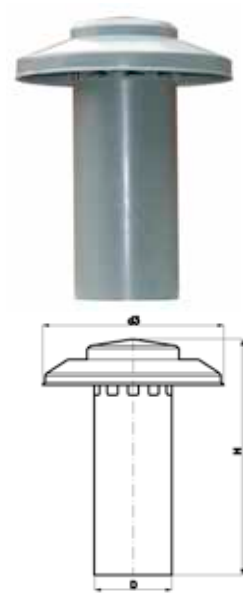
110

125



Single wall vent cowl

D	d3	H
50	148	217
60	148	217
70	148	270
80	193	270
100	193	325
110	280	325
125	280	405
160	335	455
200	403	500
250	510	615
315	550	700
400	550	700



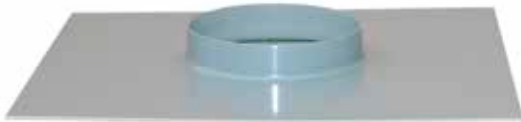
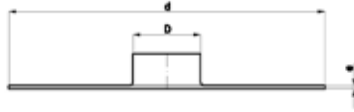
Double wall vent cowl

D	d3	H
60	148	209
70	148	252
80	193	289
100	193	322
125	280	360
160	335	399
200	403	477
250	510	550
315	550	573



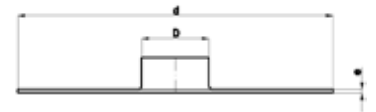
Flashing for single wall vent cowl

D	d
60	280
70	280
80	280
100	280
125	350



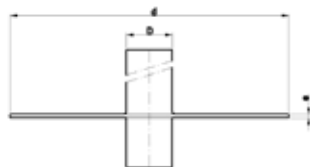
Square flashing for single wall vent cowl

D	d	e
50	200	2
110	250	2
160	333	2
200	400	2
250	500	2
315	600	3
400	800	4



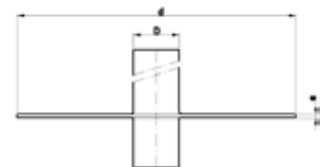
Flashing for double wall vent cowl

D	d	H
60	280	169
70	280	199
80	280	221
100	280	246
125	350	276



Square flashing for double wall vent cowl

D	d	e	H
160	333	2	299
200	400	2	330
250	500	2	393
315	600	3	455





CLIENT SPECIFIC SOLUTIONS



Client specific solutions

BT Nyloplast developed an extensive range of customized products for worldwide manufacturers of plastic pipe systems, for producers of concrete manholes and pipes, and partners active in other industries.

These products were developed in conjunction with clients, at costs that are generally lower than similar costs for injection-moulding solutions, should lower production volumes, for example in the start-up phase of a new product line, be foreseen, the development of a new product by means of thermo moulding will be a more economical.

Our in-house research & development division works with the latest 3D-drawing programs, enabling us to present a three-dimensional image of a requested product almost instantly. This advanced program also provides clear visualization of possible problems.

Indications of product cost-price and possible investments in tooling and/or moulds, can also be available in a short period of time. Moreover, with the help of our own technical department and their machine production options, we can realize a product in a short period of time.

When designing a product, right from the start, we are very aware of the necessity of a conscientious use of the quantities, and of the types of material required.

In this way we gladly advise in any kind of co-development route and the creation of a solution meeting your requirements. Our use of different production routines (injection moulding, thermo moulding, welding etc.) will likely offer broad possibilities for co-development of client specific solutions.

Following pages show some random examples of client specific solutions, be it in model or colour.



Odd shapes & sizes, client specific colours.

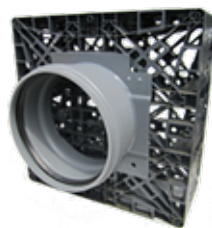


Solutions for all sorts of corrugated pipes.



Combining two fittings into one.

This example Swivel joint + T-piece.



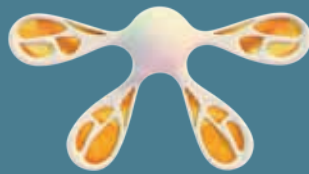
Customised connections to various systems e.g. rainwater harvesting systems.



Development and design with state of the art software.

TESSENDERLO GROUP PRODUCTS

11



Tessenderlo
Group

EVERY MOLECULE COUNTS

Other System Offering

Being a member of the Plastic Pipes Division within the Tessenderlo Group, BT Nyloplast has access to various other systems related to the transport of water or air in various forms.

Besides the BT Nyloplast manufacturing entities in the Netherlands, Germany and Hungary, we can rely upon the support of our sister companies in the Netherlands, Belgium, France, The United Kingdom, Poland and Czech Republic.

This wide geographical spread makes us understand many local markets in various application areas; be it in underground solutions or in building and installation situations.

Within the Tessenderlo Group we can rely on many experts in many fields.

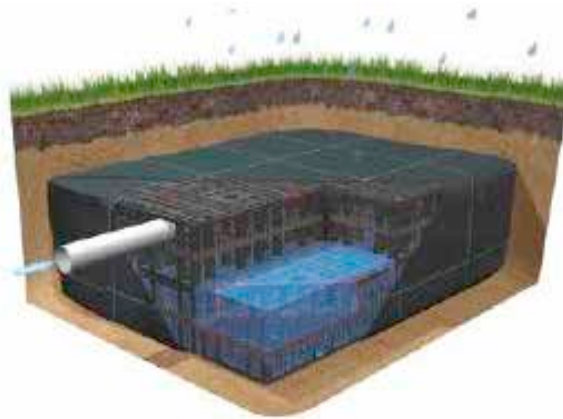
Our various overseas export markets also prove our products and services are appreciated world wide.

Following pages show a mere selection and variety of systems BT Nyloplast can offer and supply, or support you in, towards your national Tessenderlo Group partner.

Please contact us for the possibilities, or for further information.

rainbox®

attenuation solutions



Dimension	L 1200 x W 600 x D 420 mm
Gross Volume	302 L
Net Volume	290 L
Void Ratio	96 %
Weight	11,5 kg

Loading Class	Pedestrian	± 3,5t	± 12t
Min. earth covering (mm)	250	250	1900
Max. earth covering (mm)	2000	2000	1900
Max. instalation (m)	3,5	4,5	3,5
Max. number of layers	7	7	7



Assembly

Rainbox 3S crates are assembled quickly. Crates arrive on site flat-packed on pallets and consist of 2 half boxes with an intermediary plate. Boxes and plates simply snap together to make a full sized crate.

Interlocking crates are joined using minimum 2 single clips per contact side (double clips between layers).

Ultra kyma pp sn8 structured piping system for (water) drainage

- **Damage resistant at low temperature (till -10C).** The unique, corrugated design with the application of twin wall polypropylene ensures extra stability and prevents damage during installation, even at low temperature.
- **Ease of installation.** ULTRA KYMA is quick and simple to install. This means that the trench can be closed-up faster, and less inconvenience originates for people living in the vicinity and traffic.
- **Seal connections.** The sealing properties of the connecting parts were tested at a water pressure of 0,5 bars and an air pressure of -0,3 bars.
- **Ring flexibility 30%** The pipe can deform up to 30% of its diameter without being damaged.
- **Stiffness SN8.** Thanks to the high dimensional stability and stiffness of the material, ULTRA KYMA undergoes practically no deformation, even at heavy traffic areas.
- **High-quality material.** The use of only polypropylene and colour pigments without further additives contributes to the high quality of the ULTRA KYMA: the excellent chemical resistance creates a long lifetime expectancy.
- **The light weight** of ULTRA KYMA results in simple transport and ease of installation.
- **The smooth inner surface** is synonyme for high flow capacity.
- With **lengths** of 6 metres, work can be done more easily and quickly than with usually shorter concrete elements.
- ULTRA KYMA can be **simply to size**, and the piping end does not have to be chamfered.
- The corrugated outside ensures **better bedding in the earthwork** and prevents the piping from shifting during installation activities on hilly terrain.
- **Sustainable and fully (100%) recyclable.**



DN/ID (mm)	Outside (mm)	Standard length* (m)	Packed per
300/297	340	6.0	8 pcs
400/396	453	6.0	4 pcs
500/495	567	6.0	4 pcs
600/594	680	6.0	2 pcs

* effective length



BTNyloplast

think. shape. connect.